



APEX DYNAMICS, INC.

**高精度
螺旋伞齿轮减速机**

AT / ATB 系列



不锈钢-AT

铸铁-ATB

减速机系列 - AT / ATB

▶ 产品特性

不同材质外壳设计

不锈钢-AT

铸铁-ATB

各种输出轴选择

高扭力

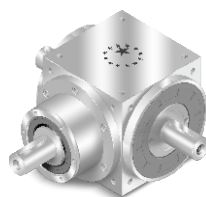
高效率

使用寿命长

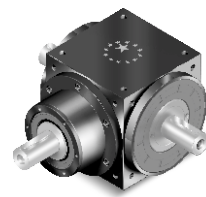
低背隙

免维护

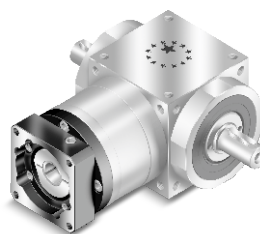
灵活的安装尺寸



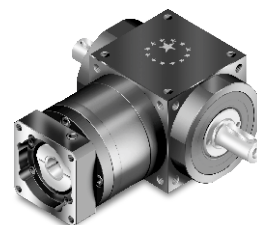
AT-L/-L1/-R1



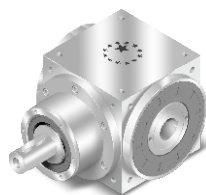
ATB-L/-L1/-R1



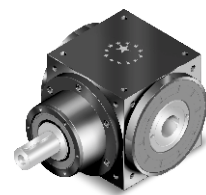
AT-FL/-FL1/-FR1



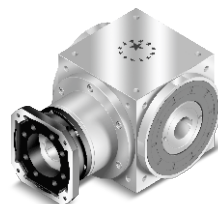
ATB-FL/-FL1/-FR1



AT-H/-C



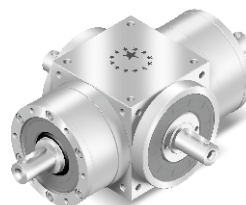
ATB-H/-C



AT-FH/-FC



ATB-FH/-FC

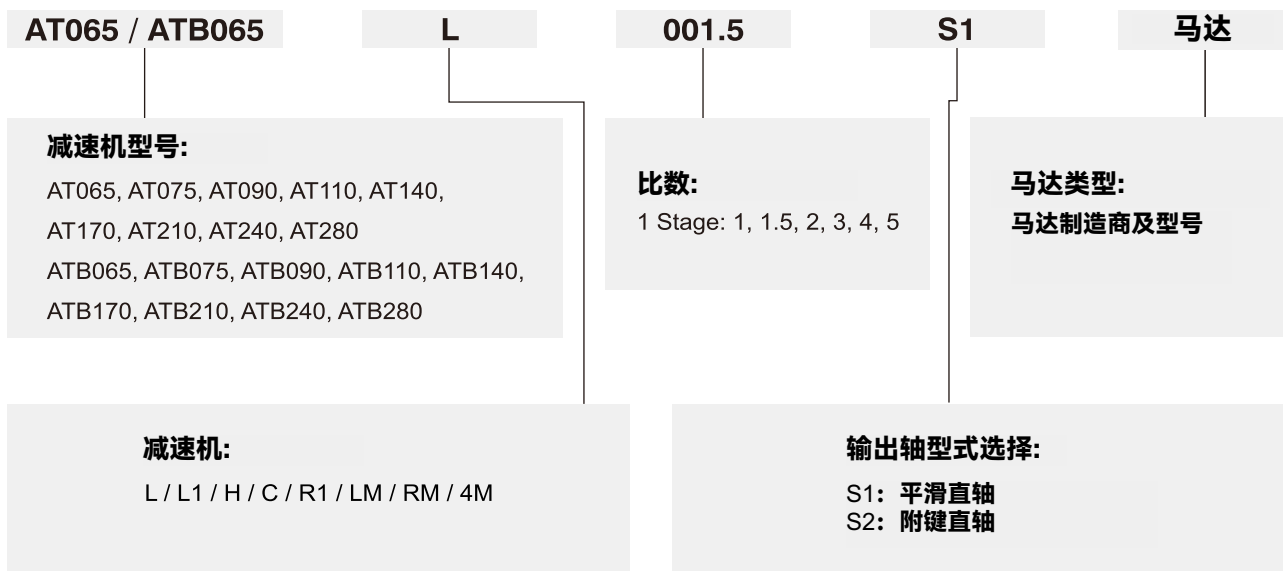


AT-4M/-LM/-RM

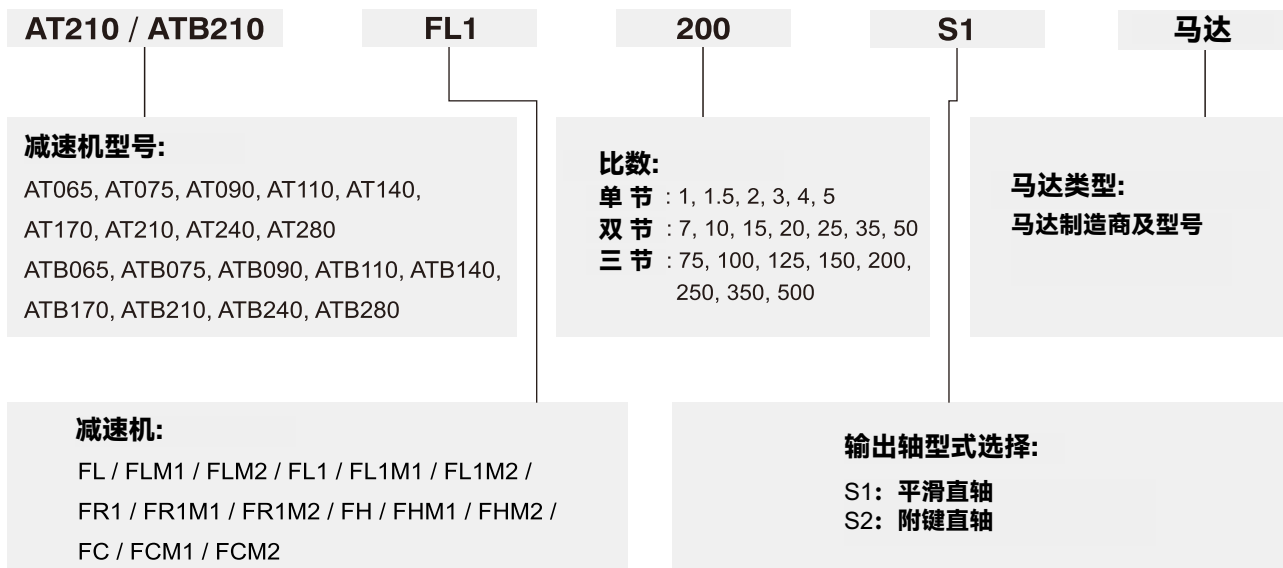


ATB-4M/-LM/-RM

订购代码

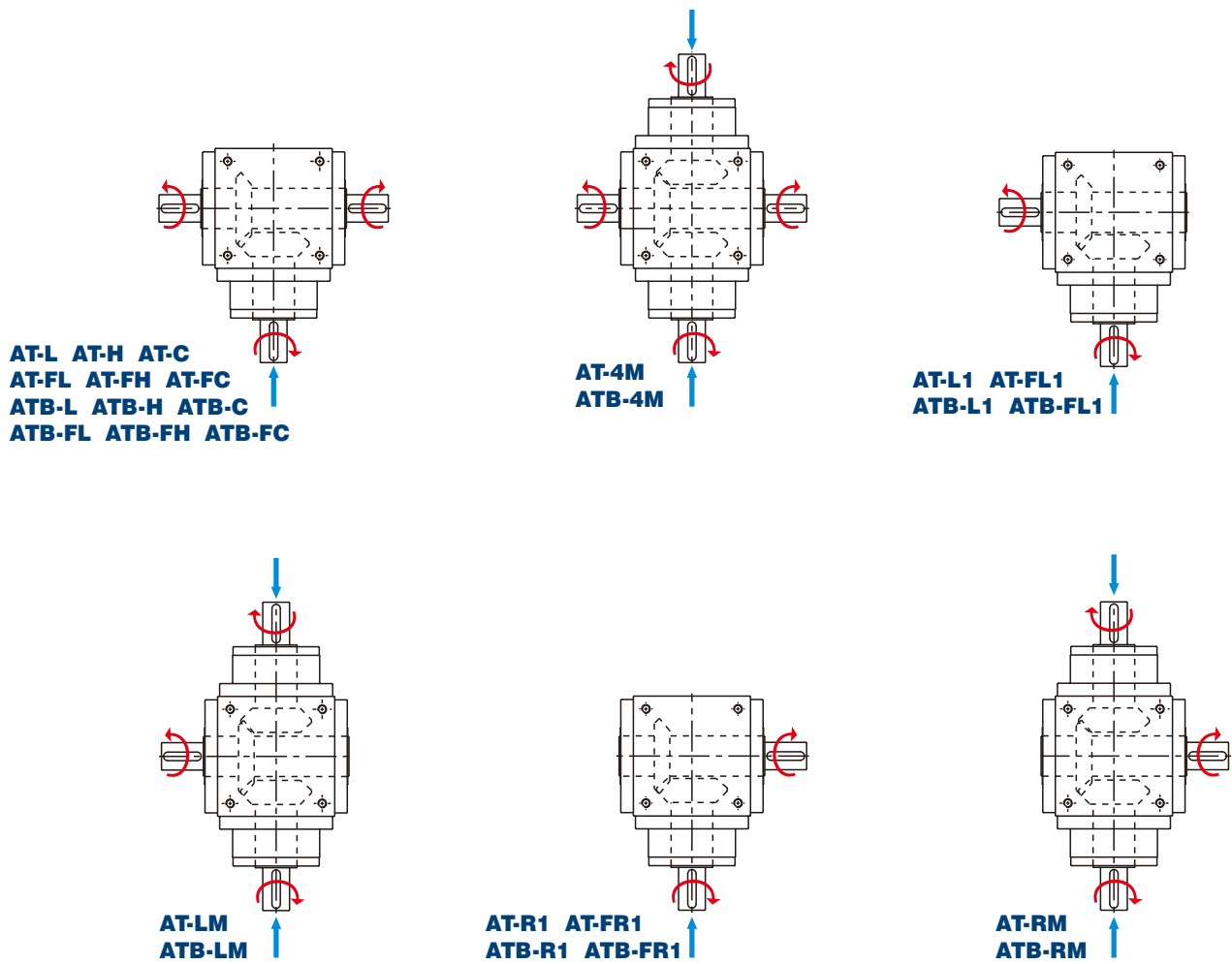


选用范例:: AT065-L-001.5-S1 / SIEMENS 1FK6 032-6AK71
ATB065-L-001.5-S1 / SIEMENS 1FK6 032-6AK71

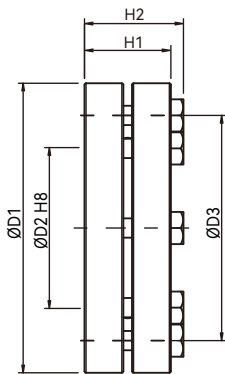


选用范例:: AT210-FL1-200-S1 / SIEMENS 1FK6 032-6AK71
ATB210-FL1-200-S1 / SIEMENS 1FK6 032-6AK71

AT/ATB 系列旋转方向



收缩圆盘附件选配



收缩圆盘

| 型号 AT/ATB | 收缩圆盘 | D1 | D2 | D3 | H1 | H2 | 螺丝 ⁽¹⁾ | T _A ⁽²⁾ | J | 订购代码 |
|--------------|--------------|-----|----|-----|------|------|-------------------|-------------------------------|--------------------|--------|
| | | | | | | | 数量 X 类型 | Nm | kg-cm ² | |
| 065/075 | SSD-d16xdw14 | 41 | 16 | 26 | 15 | 18.5 | 5xM5 | 4 | 0.3 | SSD-16 |
| 090 | SSD-d22xdw18 | 50 | 22 | 36 | 19.5 | 23 | 6xM5 | 4 | 0.8 | SSD-22 |
| 110 | SSD-d25xdw22 | 50 | 25 | 38 | 19.5 | 23 | 6xM5 | 4 | 0.8 | SSD-25 |
| 140 | SSD-d44xdw32 | 80 | 44 | 61 | 25.5 | 29.5 | 7xM6 | 12 | 6.4 | SSD-44 |
| 170 | SSD-d50xdw40 | 90 | 50 | 70 | 27.5 | 31.5 | 8xM6 | 12 | 11.2 | SSD-50 |
| 210 | SSD-d62xdw50 | 110 | 62 | 86 | 30.5 | 34.5 | 10xM6 | 12 | 26.5 | SSD-62 |
| 240 | SSD-d68xdw55 | 115 | 68 | 86 | 30.5 | 34.5 | 10xM6 | 12 | 30.9 | SSD-68 |
| 280 | SSD-d75xdw60 | 138 | 75 | 100 | 32.5 | 38 | 7xM8 | 30 | 67.1 | SSD-75 |

(1) 强度10.9级, DIN931 (2) 锁紧扭力

| 直径 | 公差 |
|-----------|---------|
| ≤ 30 | H6 / j6 |
| > 30 ~ 50 | H6 / h6 |
| > 50 ~ 80 | H6 / g6 |

* 表面粗糙度 ≤ 3.2um

产品规格 - AT/ATB轴型系列

减速机性能资料 (ATB系列的性能, 规范与AT系列相同)

| 规格 | 节数 | 减速比 ^A | AT065 L | AT075 L | AT090 L | AT110 L | AT140 L | AT170 L | AT210 L | AT240 L | AT280 L | |
|---------------------------------------|--------|------------------|------------|--------------|----------|----------|----------|----------|----------|----------|----------|--------|
| | | | AT065 L1 | AT075 L1 | AT090 L1 | AT110 L1 | AT140 L1 | AT170 L1 | AT210 L1 | AT240 L1 | AT280 L1 | |
| | | | AT065 H | AT075 H | AT090 H | AT110 H | AT140 H | AT170 H | AT210 H | AT240 H | AT280 H | |
| | | | AT065 C | AT075 C | AT090 C | AT110 C | AT140 C | AT170 C | AT210 C | AT240 C | AT280 C | |
| | | | AT065 R1 | AT075 R1 | AT090 R1 | AT110 R1 | AT140 R1 | AT170 R1 | AT210 R1 | AT240 R1 | AT280 R1 | |
| | | | AT065 LM | AT075 LM | AT090 LM | AT110 LM | AT140 LM | AT170 LM | AT210 LM | AT240 LM | AT280 LM | |
| | | | AT065 RM | AT075 RM | AT090 RM | AT110 RM | AT140 RM | AT170 RM | AT210 RM | AT240 RM | AT280 RM | |
| | | | AT065 4M | AT075 4M | AT090 4M | AT110 4M | AT140 4M | AT170 4M | AT210 4M | AT240 4M | AT280 4M | |
| 额定输出力矩 T_{2N} | Nm | 1 | 1 | 25 | 45 | 78 | 150 | 360 | 585 | 1,300 | 2,150 | 3,200 |
| | | | 1.5 | 25 | 45 | 78 | 150 | 360 | 585 | 1,300 | 2,150 | 3,200 |
| | | | 2 | 24 | 42 | 68 | 150 | 330 | 544 | 1,220 | 2,010 | 3,050 |
| | | | 3 | 18 | 33 | 54 | 120 | 270 | 450 | 1,020 | 1,650 | 2,850 |
| | | | 4 | 13 | 28 | 48 | 100 | 224 | 376 | 860 | 1,410 | 2,300 |
| | | 5 | 12 | 25 | 40 | 85 | 196 | 320 | 740 | 1,210 | 2,000 | |
| 最大加速力矩 T_{2B} | Nm | 1 | 1.5倍额定输出力矩 | | | | | | | | | |
| 额定输入转速 n_{1N} | rpm | 1 | 1~5 | | | | | | | | | |
| 容许加速输入转速 n_{1B} | rpm | 1 | 1~5 | 4,500 | 4,000 | 3,000 | 2,600 | 2,000 | 1,700 | 1,300 | 1,200 | 1,000 |
| 背隙 ^B | arcmin | 1 | 1~5 | ≤6 | ≤6 | ≤6 | ≤6 | ≤6 | ≤6 | ≤6 | ≤6 | ≤6 |
| 容许径向力 F_{1rB} ^C 输出轴d1 | N | 1 | 1~5 | 700 | 950 | 1,450 | 2,100 | 2,700 | 3,800 | 7,800 | 9,600 | 10,500 |
| 容许径向力 F_{2rB} ^D 输出轴d2 | N | 1 | 1~5 | 900 | 1,100 | 1,700 | 2,700 | 4,800 | 6,600 | 11,500 | 16,000 | 18,000 |
| 容许轴向力 F_{1aB} ^C 输出轴d1 | N | 1 | 1~5 | 350 | 425 | 725 | 1,050 | 1,350 | 1,900 | 3,900 | 4,800 | 5,250 |
| 容许轴向力 F_{2aB} ^D 输出轴d2 | N | 1 | 1~5 | 450 | 550 | 850 | 1,350 | 2,400 | 3,300 | 5,750 | 8,500 | 9,000 |
| 效率 η | % | 1 | 1~5 | ≥98% | | | | | | | | |
| 使用温度 | °C | 1 | 1~5 | -10°C ~ 90°C | | | | | | | | |
| 润滑 | | | | 合成润滑脂 | | | | | | | | |
| 噪音值 ^E | dB (A) | 1 | 1~5 | ≤68 | ≤70 | ≤74 | ≤76 | ≤77 | ≤78 | ≤80 | ≤82 | ≤83 |

减速机转动惯量 (ATB系列的性能, 规范与AT系列相同)

| 规格 | 节数 | 减速比 ^A | AT065 L | AT075 L | AT090 L | AT110 L | AT140 L | AT170 L | AT210 L | AT240 L | AT280 L | |
|------------|--------------------|------------------|----------|----------|----------|----------|----------|----------|----------|----------|----------|--------|
| | | | AT065 L1 | AT075 L1 | AT090 L1 | AT110 L1 | AT140 L1 | AT170 L1 | AT210 L1 | AT240 L1 | AT280 L1 | |
| | | | AT065 H | AT075 H | AT090 H | AT110 H | AT140 H | AT170 H | AT210 H | AT240 H | AT280 H | |
| | | | AT065 C | AT075 C | AT090 C | AT110 C | AT140 C | AT170 C | AT210 C | AT240 C | AT280 C | |
| | | | AT065 R1 | AT075 R1 | AT090 R1 | AT110 R1 | AT140 R1 | AT170 R1 | AT210 R1 | AT240 R1 | AT280 R1 | |
| | | | AT065 LM | AT075 LM | AT090 LM | AT110 LM | AT140 LM | AT170 LM | AT210 LM | AT240 LM | AT280 LM | |
| | | | AT065 RM | AT075 RM | AT090 RM | AT110 RM | AT140 RM | AT170 RM | AT210 RM | AT240 RM | AT280 RM | |
| | | | AT065 4M | AT075 4M | AT090 4M | AT110 4M | AT140 4M | AT170 4M | AT210 4M | AT240 4M | AT280 4M | |
| 转动惯量 J_1 | kg·cm ² | 1 | 1 | 0.51 | 1.30 | 3.16 | 7.70 | 23.57 | 58.99 | 195.40 | 369.34 | 799.12 |
| | | | 1.5 | 0.64 | 1.16 | 2.82 | 6.74 | 19.37 | 49.28 | 155.45 | 283.58 | 595.78 |
| | | | 2 | 0.44 | 1.11 | 2.70 | 6.31 | 17.75 | 45.35 | 140.24 | 249.74 | 511.76 |
| | | | 3 | 0.43 | 1.09 | 2.66 | 6.17 | 17.18 | 44.01 | 134.95 | 237.71 | 483.06 |
| | | | 4 | 0.43 | 1.09 | 2.65 | 6.13 | 17.06 | 43.70 | 133.58 | 234.72 | 476.26 |
| | | 5 | 0.43 | 1.09 | 2.65 | 6.12 | 17.02 | 43.60 | 133.14 | 233.67 | 473.58 | |

重量

| 型号 | 节数 | 减速比 ^A | AT065 | AT075 | AT090 | AT110 | AT140 | AT170 | AT210 | AT240 | AT280 |
|------|----|------------------|-------|-------|-------|-------|-------|-------|-------|-------|-------|
| L系列 | 1 | 1~5 | 2.6 | 4.2 | 6.8 | 11.6 | 19.8 | 34.8 | 66.2 | 98.1 | 155.7 |
| L1系列 | 1 | 1~5 | 2.6 | 4.1 | 6.7 | 11.5 | 19.5 | 34.2 | 65.1 | 96.6 | 153.4 |
| H系列 | 1 | 1~5 | 2.5 | 3.9 | 6.4 | 11.0 | 18.1 | 31.6 | 60.0 | 89.4 | 143.4 |
| C系列 | 1 | 1~5 | 2.8 | 4.2 | 6.9 | 11.4 | 19.6 | 33.7 | 63.3 | 97.9 | 149.1 |
| R1系列 | 1 | 1~5 | 2.6 | 4.1 | 6.7 | 11.5 | 19.5 | 34.2 | 65.1 | 96.6 | 153.4 |
| LM系列 | 1 | 1 | 3.5 | 5.6 | 9.0 | 15.2 | 24.1 | 42.4 | 81.4 | 122.0 | 190.9 |
| RM系列 | 1 | 1 | 3.5 | 5.6 | 9.0 | 15.2 | 24.1 | 42.4 | 81.4 | 122.0 | 190.9 |
| 4M系列 | 1 | 1 | 3.5 | 5.6 | 9.1 | 15.4 | 24.8 | 42.6 | 82.5 | 123.5 | 193.3 |

A. 减速比 ($i=N_{in}/N_{out}$): AT-LM/RM/4M只提供1:1比数。

B. 背隙值是在2%额定力矩 T_{2N} 的扭力下测得。

C. 容许加速输入转速 n_{1B} 作用于输入轴中心位置。

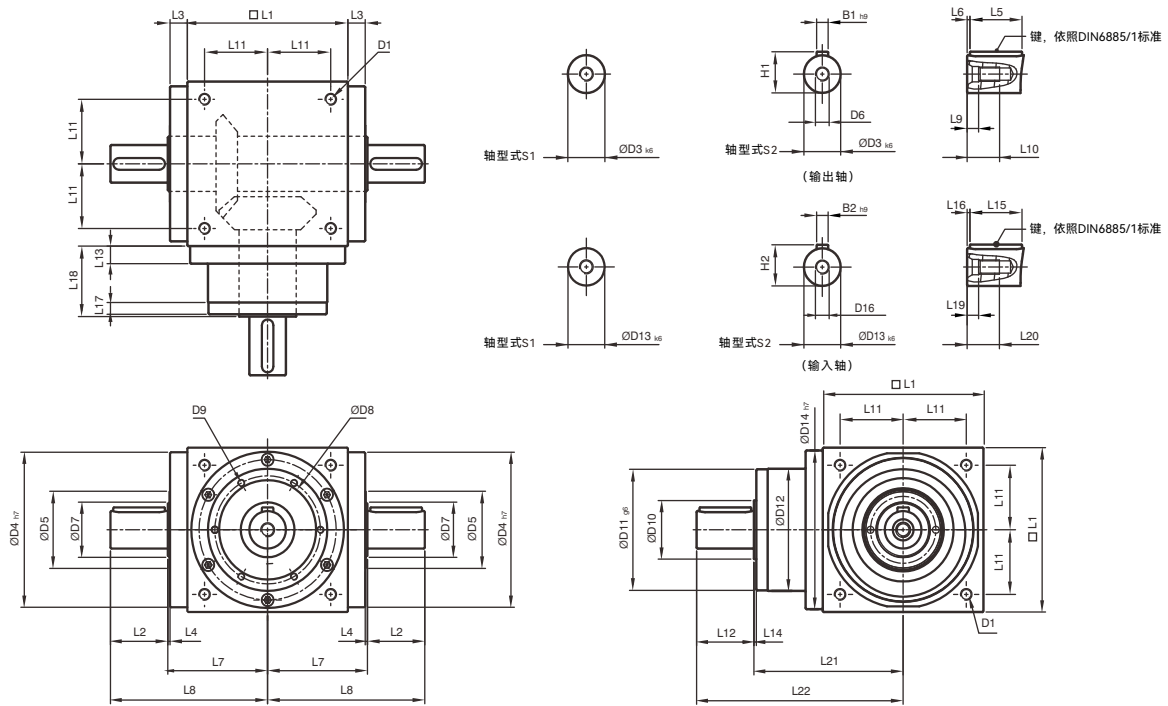
D. 容许加速输入转速 n_{1B} 作用于输出轴中心位置。

E. 噪音值是在无负载状态, 减速机以1,500rpm, 减速比5(单节)时量测取得。

或在相应的额定输入速度下采用更大模型尺寸的数据作为参考。

低速比或者高转速状态下, 值将会更高。

AT-L / ATB-L系列尺寸 (单节, 减速比 i=1~5)



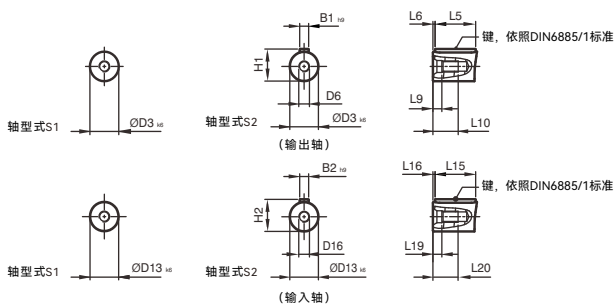
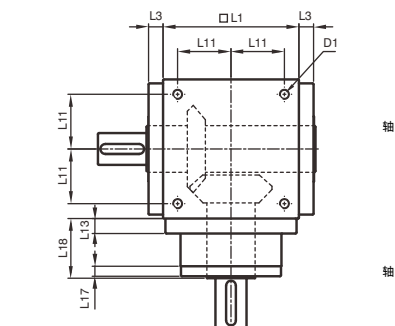
*ATB系列的尺寸与AT系列相同。

[单位: mm]

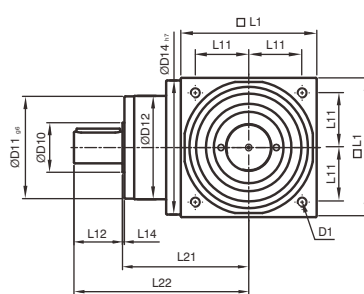
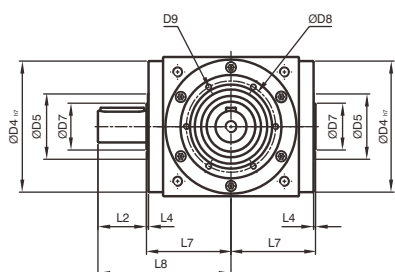
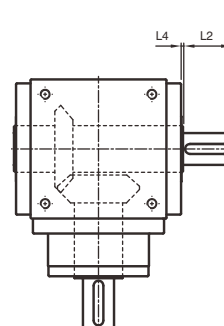
| 尺寸 | AT065 L | AT075 L | AT090 L | AT110 L | AT140 L | AT170 L | AT210 L | AT240 L | AT280 L |
|-------------------|---------|---------|---------|----------|----------|------------|------------|------------|-----------|
| D1 | M4 | M6 | M6 | M8 | M10 | M12 | M16 | M16 | M16 |
| D3 _{k6} | 13 | 16 | 18 | 22 | 32 | 40 | 50 | 55 | 60 |
| D4 _{h7} | 63 | 73 | 88 | 108 | 135 | 165 | 205 | 235 | 275 |
| D5 | 31 | 35 | 43 | 53 | 68 | 83 | 104 | 124 | 144 |
| D6 | M4 | M5 | M5 | M8 | M12 | M16 | M16 | M16 | M20 |
| D7 | 21 | 22 | 28 | 33 | 47 | 55 | 75 | 85 | 110 |
| D8 | 53 | 62 | 76 | 95 | 92 | 114 | 142 | 160 | 176 |
| D9 | 4xM4xL7 | 4xM5xL8 | 4xM5xL8 | 6xM6xL10 | 6xM6xL10 | 6xM8xL12.5 | 6xM8xL12.5 | 6xM8xL12.5 | 6xM10xL15 |
| D10 | 15.4 | 20.4 | 25.8 | 35.8 | 49.8 | 59.3 | 79.3 | 92.3 | 102.3 |
| D11 _{g6} | 62.9 | 72.9 | 87 | 107 | 103 | 127 | 158 | 178 | 198 |
| D12 | 62 | 72 | 86 | 106 | 104 | 128 | 160 | 180 | 200 |
| D13 _{k6} | 13 | 16 | 18 | 22 | 32 | 40 | 50 | 55 | 60 |
| D14 _{h7} | 63 | 73 | 88 | 108 | 135 | 165 | 205 | 235 | 275 |
| D16 | M4 | M5 | M5 | M8 | M12 | M16 | M16 | M16 | M20 |
| L1 | 65 | 75 | 90 | 110 | 140 | 170 | 210 | 240 | 280 |
| L2 | 19.5 | 30 | 35 | 40 | 50 | 60 | 75 | 85 | 110 |
| L3 | 13 | 14.5 | 15 | 15 | 15 | 15 | 20 | 25 | 25 |
| L4 | 2 | 2 | 2 | 2 | 2 | 2 | 2 | 2 | 2 |
| L5 | 16 | 25 | 28 | 32 | 45 | 50 | 70 | 80 | 100 |
| L6 | 2 | 2.5 | 3.5 | 4 | 2.5 | 5 | 2.5 | 2.5 | 5 |
| L7 | 47.5 | 54 | 62 | 72 | 87 | 102 | 127 | 147 | 167 |
| L8 | 67 | 84 | 97 | 112 | 137 | 162 | 202 | 232 | 277 |
| L9 | 4.5 | 4.8 | 4.8 | 7.2 | 10 | 12 | 12 | 12 | 15 |
| L10 | 10 | 12.5 | 12.5 | 19 | 28 | 36 | 36 | 36 | 42 |
| L11 | 27 | 30 | 36 | 44 | 55 | 67 | 85 | 95 | 110 |
| L12 | 19.5 | 30 | 35 | 40 | 50 | 60 | 75 | 85 | 110 |
| L13 | 13 | 15 | 15 | 15 | 15 | 15 | 20 | 25 | 25 |
| L14 | 2 | 2 | 2 | 2 | 2 | 2 | 2 | 2 | 2 |
| L15 | 16 | 25 | 28 | 32 | 45 | 50 | 70 | 80 | 100 |
| L16 | 2 | 2.5 | 3.5 | 4 | 2.5 | 5 | 2.5 | 2.5 | 5 |
| L17 | 6 | 8 | 8 | 8 | 10 | 10 | 10 | 10 | 10 |
| L18 | 43 | 52.5 | 55 | 60 | 60 | 70 | 90 | 105 | 120 |
| L19 | 4.5 | 4.8 | 4.8 | 7.2 | 10 | 12 | 12 | 12 | 15 |
| L20 | 10 | 12.5 | 12.5 | 19 | 28 | 36 | 36 | 36 | 42 |
| L21 | 75.5 | 90 | 100 | 115 | 130 | 155 | 195 | 225 | 260 |
| L22 | 95 | 120 | 135 | 155 | 180 | 215 | 270 | 310 | 370 |
| B1 _{h9} | 5 | 5 | 6 | 6 | 10 | 12 | 14 | 16 | 18 |
| B2 _{h9} | 5 | 5 | 6 | 6 | 10 | 12 | 14 | 16 | 18 |
| H1 | 15 | 18 | 20.5 | 24.5 | 35 | 43 | 53.5 | 59 | 64 |
| H2 | 15 | 18 | 20.5 | 24.5 | 35 | 43 | 53.5 | 59 | 64 |

AT-L1/R1 | ATB-L1/R1系列尺寸 (单节, 减速比 i=1~5)

AT-L1



AT-R1

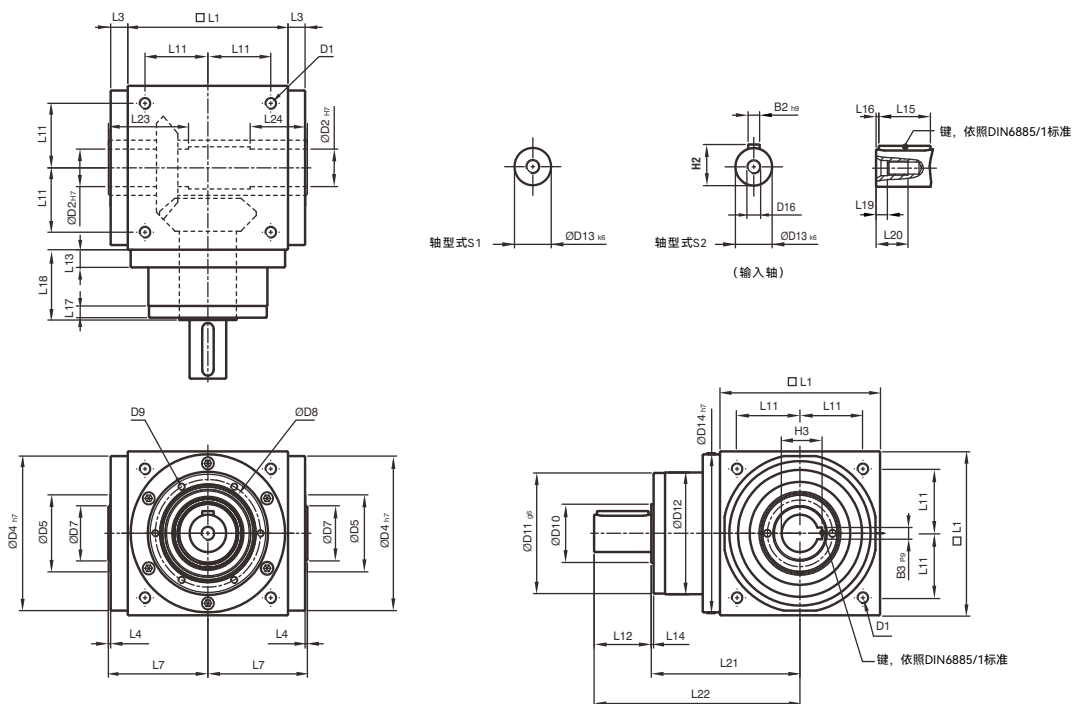


*ATB系列的尺寸与AT系列相同。

[单位: mm]

| 尺寸 | AT065 L1/R1 | AT075 L1/R1 | AT090 L1/R1 | AT110 L1/R1 | AT140 L1/R1 | AT170 L1/R1 | AT210 L1/R1 | AT240 L1/R1 | AT280 L1/R1 |
|--------|-------------|-------------|-------------|-------------|-------------|-------------|-------------|-------------|-------------|
| D1 | M4 | M6 | M6 | M8 | M10 | M12 | M16 | M16 | M16 |
| D3 k6 | 13 | 16 | 18 | 22 | 32 | 40 | 50 | 55 | 60 |
| D4 h7 | 63 | 73 | 88 | 108 | 135 | 165 | 205 | 235 | 275 |
| D5 | 31 | 35 | 43 | 53 | 68 | 83 | 104 | 124 | 144 |
| D6 | M4 | M5 | M5 | M8 | M12 | M16 | M16 | M16 | M20 |
| D7 | 21 | 22 | 28 | 33 | 47 | 55 | 75 | 85 | 110 |
| D8 | 53 | 62 | 76 | 95 | 92 | 114 | 142 | 160 | 176 |
| D9 | 4xM4xL7 | 4xM5xL8 | 4xM5xL8 | 6xM6xL10 | 6xM6xL10 | 6xM8xL12.5 | 6xM8xL12.5 | 6xM8xL12.5 | 6xM10xL15 |
| D10 | 15.4 | 20.4 | 25.8 | 35.8 | 49.8 | 59.3 | 79.3 | 92.3 | 102.3 |
| D11 g6 | 62.9 | 72.9 | 87 | 107 | 103 | 127 | 158 | 178 | 198 |
| D12 | 62 | 72 | 86 | 106 | 104 | 128 | 160 | 180 | 200 |
| D13 k6 | 13 | 16 | 18 | 22 | 32 | 40 | 50 | 55 | 60 |
| D14 h7 | 63 | 73 | 88 | 108 | 135 | 165 | 205 | 235 | 275 |
| D16 | M4 | M5 | M5 | M8 | M12 | M16 | M16 | M16 | M20 |
| L1 | 65 | 75 | 90 | 110 | 140 | 170 | 210 | 240 | 280 |
| L2 | 19.5 | 30 | 35 | 40 | 50 | 60 | 75 | 85 | 110 |
| L3 | 13 | 14.5 | 15 | 15 | 15 | 15 | 20 | 25 | 25 |
| L4 | 2 | 2 | 2 | 2 | 2 | 2 | 2 | 2 | 2 |
| L5 | 16 | 25 | 28 | 32 | 45 | 50 | 70 | 80 | 100 |
| L6 | 2 | 2.5 | 3.5 | 4 | 2.5 | 5 | 2.5 | 2.5 | 5 |
| L7 | 47.5 | 54 | 62 | 72 | 87 | 102 | 127 | 147 | 167 |
| L8 | 67 | 84 | 97 | 112 | 137 | 162 | 202 | 232 | 277 |
| L9 | 4.5 | 4.8 | 4.8 | 7.2 | 10 | 12 | 12 | 12 | 15 |
| L10 | 10 | 12.5 | 12.5 | 19 | 28 | 36 | 36 | 36 | 42 |
| L11 | 27 | 30 | 36 | 44 | 55 | 67 | 85 | 95 | 110 |
| L12 | 19.5 | 30 | 35 | 40 | 50 | 60 | 75 | 85 | 110 |
| L13 | 13 | 15 | 15 | 15 | 15 | 15 | 20 | 25 | 25 |
| L14 | 2 | 2 | 2 | 2 | 2 | 2 | 2 | 2 | 2 |
| L15 | 16 | 25 | 28 | 32 | 45 | 50 | 70 | 80 | 100 |
| L16 | 2 | 2.5 | 3.5 | 4 | 2.5 | 5 | 2.5 | 2.5 | 5 |
| L17 | 6 | 8 | 8 | 8 | 10 | 10 | 10 | 10 | 10 |
| L18 | 43 | 52.5 | 55 | 60 | 60 | 70 | 90 | 105 | 120 |
| L19 | 4.5 | 4.8 | 4.8 | 7.2 | 10 | 12 | 12 | 12 | 15 |
| L20 | 10 | 12.5 | 12.5 | 19 | 28 | 36 | 36 | 36 | 42 |
| L21 | 75.5 | 90 | 100 | 115 | 130 | 155 | 195 | 225 | 260 |
| L22 | 95 | 120 | 135 | 155 | 180 | 215 | 270 | 310 | 370 |
| B1 h9 | 5 | 5 | 6 | 6 | 10 | 12 | 14 | 16 | 18 |
| B2 h9 | 5 | 5 | 6 | 6 | 10 | 12 | 14 | 16 | 18 |
| H1 | 15 | 18 | 20.5 | 24.5 | 35 | 43 | 53.5 | 59 | 64 |
| H2 | 15 | 18 | 20.5 | 24.5 | 35 | 43 | 53.5 | 59 | 64 |

AT-H / ATB-H系列尺寸 (单节, 减速比 i=1~5)

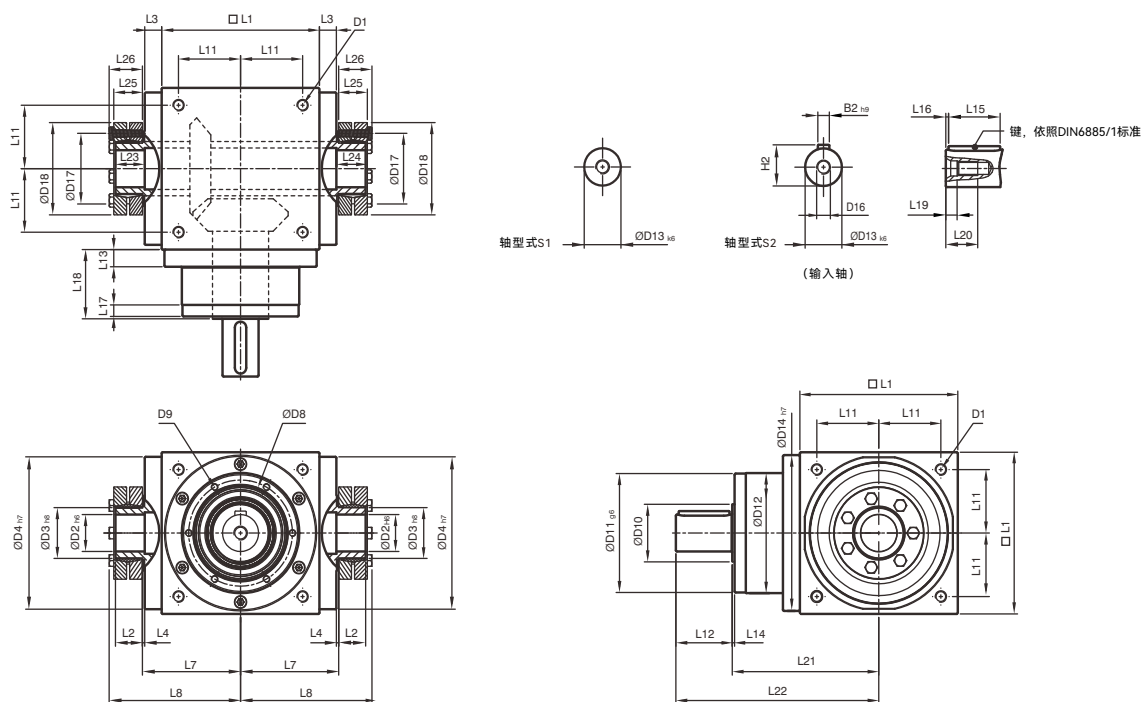


*ATB系列的尺寸与AT系列相同。

[单位: mm]

| 尺寸 | AT065 H | AT075 H | AT090 H | AT110 H | AT140 H | AT170 H | AT210 H | AT240 H | AT280 H |
|--------|---------|---------|---------|----------|----------|------------|------------|------------|-----------|
| D1 | M4 | M6 | M6 | M8 | M10 | M12 | M16 | M16 | M16 |
| D2 h7 | 13 | 14 | 18 | 22 | 32 | 40 | 50 | 55 | 60 |
| D4 h7 | 63 | 73 | 88 | 108 | 135 | 165 | 205 | 235 | 275 |
| D5 | 31 | 35 | 43 | 53 | 68 | 83 | 104 | 124 | 144 |
| D7 | 21 | 22 | 28 | 33 | 47 | 55 | 75 | 85 | 110 |
| D8 | 53 | 62 | 76 | 95 | 92 | 114 | 142 | 160 | 176 |
| D9 | 4xM4xL7 | 4xM5xL8 | 4xM5xL8 | 6xM6xL10 | 6xM6xL10 | 6xM8xL12.5 | 6xM8xL12.5 | 6xM8xL12.5 | 6xM10xL15 |
| D10 | 15.4 | 20.4 | 25.8 | 35.8 | 49.8 | 59.3 | 79.3 | 92.3 | 102.3 |
| D11 g6 | 62.9 | 72.9 | 87 | 107 | 103 | 127 | 158 | 178 | 198 |
| D12 | 62 | 72 | 86 | 106 | 104 | 128 | 160 | 180 | 200 |
| D13 k6 | 13 | 16 | 18 | 22 | 32 | 40 | 50 | 55 | 60 |
| D14 h7 | 63 | 73 | 88 | 108 | 135 | 165 | 205 | 235 | 275 |
| D16 | M4 | M5 | M5 | M8 | M12 | M16 | M16 | M16 | M20 |
| L1 | 65 | 75 | 90 | 110 | 140 | 170 | 210 | 240 | 280 |
| L3 | 13 | 14.5 | 15 | 15 | 15 | 15 | 20 | 25 | 25 |
| L4 | 2 | 2 | 2 | 2 | 2 | 2 | 2 | 2 | 2 |
| L7 | 47.5 | 54 | 62 | 72 | 87 | 102 | 127 | 147 | 167 |
| L11 | 27 | 30 | 36 | 44 | 55 | 67 | 85 | 95 | 110 |
| L12 | 19.5 | 30 | 35 | 40 | 50 | 60 | 75 | 85 | 110 |
| L13 | 13 | 15 | 15 | 15 | 15 | 15 | 20 | 25 | 25 |
| L14 | 2 | 2 | 2 | 2 | 2 | 2 | 2 | 2 | 2 |
| L15 | 16 | 25 | 28 | 32 | 45 | 50 | 70 | 80 | 100 |
| L16 | 2 | 2.5 | 3.5 | 4 | 2.5 | 5 | 2.5 | 2.5 | 5 |
| L17 | 6 | 8 | 8 | 8 | 10 | 10 | 10 | 10 | 10 |
| L18 | 43 | 52.5 | 55 | 60 | 60 | 70 | 90 | 105 | 120 |
| L19 | 4.5 | 4.8 | 4.8 | 7.2 | 10 | 12 | 12 | 12 | 15 |
| L20 | 10 | 12.5 | 12.5 | 19 | 28 | 36 | 36 | 36 | 42 |
| L21 | 75.5 | 90 | 100 | 115 | 130 | 155 | 195 | 225 | 260 |
| L22 | 95 | 120 | 135 | 155 | 180 | 215 | 270 | 310 | 370 |
| L23 | 40 | 47 | 52 | 53 | 70 | 80 | 95 | 115 | 115 |
| L24 | 30 | 32 | 35 | 35 | 50 | 55 | 65 | 80 | 80 |
| B2 h9 | 5 | 5 | 6 | 6 | 10 | 12 | 14 | 16 | 18 |
| B3 p9 | 5 | 5 | 6 | 6 | 10 | 12 | 14 | 16 | 18 |
| H2 | 15 | 18 | 20.5 | 24.5 | 35 | 43 | 53.5 | 59 | 64 |
| H3 | 15.3 | 16.3 | 20.8 | 24.8 | 35.3 | 43.3 | 53.8 | 59.3 | 64.4 |

AT-C / ATB-C系列尺寸 (单节, 减速比 i=1~5)



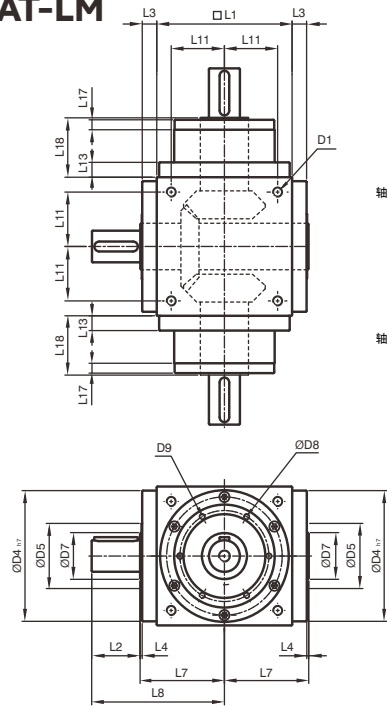
*ATB系列的尺寸与AT系列相同。

[单位: mm]

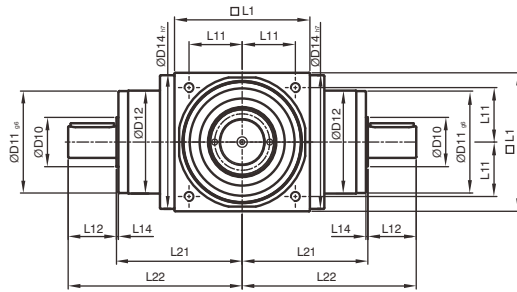
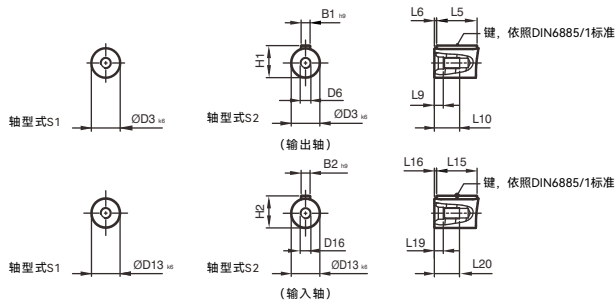
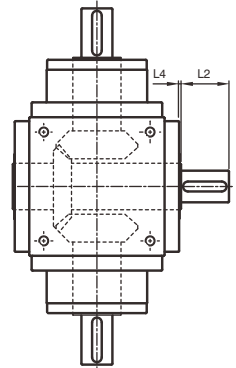
| 尺寸 | AT065 C | AT075 C | AT090 C | AT110 C | AT140 C | AT170 C | AT210 C | AT240 C | AT280 C |
|-------------------|---------|---------|---------|----------|----------|------------|------------|------------|-----------|
| D1 | M4 | M6 | M6 | M8 | M10 | M12 | M16 | M16 | M16 |
| D2 _{H6} | 13 | 14 | 18 | 22 | 32 | 40 | 50 | 55 | 60 |
| D3 _{h8} | 16 | 16 | 22 | 25 | 44 | 50 | 62 | 68 | 75 |
| D4 _{h7} | 63 | 73 | 88 | 108 | 135 | 165 | 205 | 235 | 275 |
| D8 | 53 | 62 | 76 | 95 | 92 | 114 | 142 | 160 | 176 |
| D9 | 4xM4xL7 | 4xM5xL8 | 4xM5xL8 | 6xM6xL10 | 6xM6xL10 | 6xM8xL12.5 | 6xM8xL12.5 | 6xM8xL12.5 | 6xM10xL15 |
| D10 | 15.4 | 20.4 | 25.8 | 35.8 | 49.8 | 59.3 | 79.3 | 92.3 | 102.3 |
| D11 _{g6} | 62.9 | 72.9 | 87 | 107 | 103 | 127 | 158 | 178 | 198 |
| D12 | 62 | 72 | 86 | 106 | 104 | 128 | 160 | 180 | 200 |
| D13 _{k6} | 13 | 16 | 18 | 22 | 32 | 40 | 50 | 55 | 60 |
| D14 _{h7} | 63 | 73 | 88 | 108 | 135 | 165 | 205 | 235 | 275 |
| D16 | M4 | M5 | M5 | M8 | M12 | M16 | M16 | M16 | M20 |
| D17 | 26 | 26 | 36 | 38 | 61 | 70 | 86 | 86 | 100 |
| D18 | 41 | 41 | 50 | 50 | 80 | 90 | 110 | 115 | 138 |
| L1 | 65 | 75 | 90 | 110 | 140 | 170 | 210 | 240 | 280 |
| L2 | 14 | 14 | 18 | 18 | 24 | 26 | 29 | 29 | 30.5 |
| L3 | 13 | 14.5 | 15 | 15 | 15 | 15 | 20 | 25 | 25 |
| L4 | 2 | 2 | 2 | 2 | 2 | 2 | 2 | 2 | 2 |
| L7 | 47.5 | 54 | 62 | 72 | 87 | 102 | 127 | 147 | 167 |
| L8 | 66 | 72.5 | 85 | 95 | 116.5 | 133.5 | 161.5 | 181.5 | 205 |
| L11 | 27 | 30 | 36 | 44 | 55 | 67 | 85 | 95 | 110 |
| L12 | 19.5 | 30 | 35 | 40 | 50 | 60 | 75 | 85 | 110 |
| L13 | 13 | 15 | 15 | 15 | 15 | 15 | 20 | 25 | 25 |
| L14 | 2 | 2 | 2 | 2 | 2 | 2 | 2 | 2 | 2 |
| L15 | 16 | 25 | 28 | 32 | 45 | 50 | 70 | 80 | 100 |
| L16 | 2 | 2.5 | 3.5 | 4 | 2.5 | 5 | 2.5 | 2.5 | 5 |
| L17 | 6 | 8 | 8 | 8 | 10 | 10 | 10 | 10 | 10 |
| L18 | 43 | 52.5 | 55 | 60 | 60 | 70 | 90 | 105 | 120 |
| L19 | 4.5 | 4.8 | 4.8 | 7.2 | 10 | 12 | 12 | 12 | 15 |
| L20 | 10 | 12.5 | 12.5 | 19 | 28 | 36 | 36 | 36 | 42 |
| L21 | 75.5 | 90 | 100 | 115 | 130 | 155 | 195 | 225 | 260 |
| L22 | 95 | 120 | 135 | 155 | 180 | 215 | 270 | 310 | 370 |
| L23 | 15 | 15 | 20 | 20 | 26 | 28 | 31 | 31 | 32.5 |
| L24 | 15 | 15 | 20 | 20 | 26 | 28 | 31 | 31 | 32.5 |
| L25 | 15 | 15 | 19.5 | 19.5 | 25.5 | 27.5 | 30.5 | 30.5 | 32.5 |
| L26 | 18.5 | 18.5 | 23 | 23 | 29.5 | 31.5 | 34.5 | 34.5 | 38 |
| B2 _{h9} | 5 | 5 | 6 | 6 | 10 | 12 | 14 | 16 | 18 |
| H2 | 15 | 18 | 20.5 | 24.5 | 35 | 43 | 53.5 | 59 | 64 |

AT-LM/RM | ATB-LM/RM系列尺寸 (单节, 减速比 i=1)

AT-LM



AT-RM

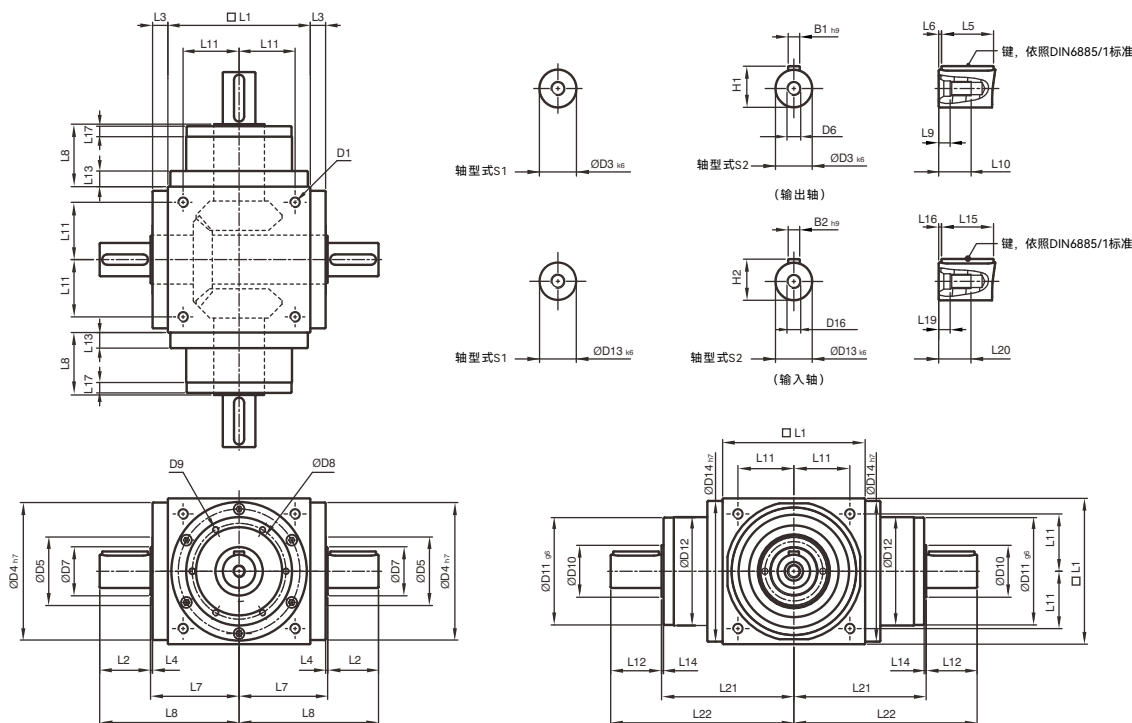


*ATB系列的尺寸与AT系列相同。

[单位: mm]

| 尺寸 | AT065LM/RM | AT075LM/RM | AT090LM/RM | AT110LM/RM | AT140LM/RM | AT170LM/RM | AT210LM/RM | AT240LM/RM | AT280LM/RM |
|--------|------------|------------|------------|------------|------------|------------|------------|------------|------------|
| D1 | M4 | M6 | M6 | M8 | M10 | M12 | M16 | M16 | M16 |
| D3 k6 | 13 | 16 | 18 | 22 | 32 | 40 | 50 | 55 | 60 |
| D4 h7 | 63 | 73 | 88 | 108 | 135 | 165 | 205 | 235 | 275 |
| D5 | 31 | 35 | 43 | 53 | 68 | 83 | 104 | 124 | 144 |
| D6 | M4 | M5 | M5 | M8 | M12 | M16 | M16 | M16 | M20 |
| D7 | 21 | 22 | 28 | 33 | 47 | 55 | 75 | 85 | 110 |
| D8 | 53 | 62 | 76 | 95 | 92 | 114 | 142 | 160 | 176 |
| D9 | 4xM4xL7 | 4xM5xL8 | 4xM5xL8 | 6xM6xL10 | 6xM6xL10 | 6xM8xL12.5 | 6xM8xL12.5 | 6xM8xL12.5 | 6xM10xL15 |
| D10 | 15.4 | 20.4 | 25.8 | 35.8 | 49.8 | 59.3 | 79.3 | 92.3 | 102.3 |
| D11 g6 | 62.9 | 72.9 | 87 | 107 | 127 | 158 | 178 | 198 | 218 |
| D12 | 62 | 72 | 86 | 106 | 104 | 128 | 160 | 180 | 200 |
| D13 k6 | 13 | 16 | 18 | 22 | 32 | 40 | 50 | 55 | 60 |
| D14 h7 | 63 | 73 | 88 | 108 | 135 | 165 | 205 | 235 | 275 |
| D16 | M4 | M5 | M5 | M8 | M12 | M16 | M16 | M16 | M20 |
| L1 | 65 | 75 | 90 | 110 | 140 | 170 | 210 | 240 | 280 |
| L2 | 19.5 | 30 | 35 | 40 | 50 | 60 | 75 | 85 | 110 |
| L3 | 13 | 14.5 | 15 | 15 | 15 | 15 | 20 | 25 | 25 |
| L4 | 2 | 2 | 2 | 2 | 2 | 2 | 2 | 2 | 2 |
| L5 | 16 | 25 | 28 | 32 | 45 | 50 | 70 | 80 | 100 |
| L6 | 2 | 2.5 | 3.5 | 4 | 2.5 | 5 | 2.5 | 2.5 | 5 |
| L7 | 47.5 | 54 | 62 | 72 | 87 | 102 | 127 | 147 | 167 |
| L8 | 67 | 84 | 97 | 112 | 137 | 162 | 202 | 232 | 277 |
| L9 | 4.5 | 4.8 | 4.8 | 7.2 | 10 | 12 | 12 | 12 | 15 |
| L10 | 10 | 12.5 | 12.5 | 19 | 28 | 36 | 36 | 36 | 42 |
| L11 | 27 | 30 | 36 | 44 | 55 | 67 | 85 | 95 | 110 |
| L12 | 19.5 | 30 | 35 | 40 | 50 | 60 | 75 | 85 | 110 |
| L13 | 13 | 15 | 15 | 15 | 15 | 15 | 20 | 25 | 25 |
| L14 | 2 | 2 | 2 | 2 | 2 | 2 | 2 | 2 | 2 |
| L15 | 16 | 25 | 28 | 32 | 45 | 50 | 70 | 80 | 100 |
| L16 | 2 | 2.5 | 3.5 | 4 | 2.5 | 5 | 2.5 | 2.5 | 5 |
| L17 | 6 | 8 | 8 | 8 | 10 | 10 | 10 | 10 | 10 |
| L18 | 43 | 52.5 | 55 | 60 | 60 | 70 | 90 | 105 | 120 |
| L19 | 4.5 | 4.8 | 4.8 | 7.2 | 10 | 12 | 12 | 12 | 15 |
| L20 | 10 | 12.5 | 12.5 | 19 | 28 | 36 | 36 | 36 | 42 |
| L21 | 75.5 | 90 | 100 | 115 | 130 | 155 | 195 | 225 | 260 |
| L22 | 95 | 120 | 135 | 155 | 180 | 215 | 270 | 310 | 370 |
| B1 h9 | 5 | 5 | 6 | 6 | 10 | 12 | 14 | 16 | 18 |
| B2 h9 | 5 | 5 | 6 | 6 | 10 | 12 | 14 | 16 | 18 |
| H1 | 15 | 18 | 20.5 | 24.5 | 35 | 43 | 53.5 | 59 | 64 |
| H2 | 15 | 18 | 20.5 | 24.5 | 35 | 43 | 53.5 | 59 | 64 |

AT-4M / ATB-4M系列尺寸 (单节, 减速比 i=1)



*ATB系列的尺寸与AT系列相同。

[单位: mm]

| 尺寸 | AT065 4M | AT075 4M | AT090 4M | AT110 4M | AT140 4M | AT170 4M | AT210 4M | AT240 4M | AT280 4M |
|--------|----------|----------|----------|----------|----------|------------|------------|------------|-----------|
| D1 | M4 | M6 | M6 | M8 | M10 | M12 | M16 | M16 | M16 |
| D3 k6 | 13 | 16 | 18 | 22 | 32 | 40 | 50 | 55 | 60 |
| D4 h7 | 63 | 73 | 88 | 108 | 135 | 165 | 205 | 235 | 275 |
| D5 | 31 | 35 | 43 | 53 | 68 | 83 | 104 | 124 | 144 |
| D6 | M4 | M5 | M5 | M8 | M12 | M16 | M16 | M16 | M20 |
| D7 | 21 | 22 | 28 | 33 | 47 | 55 | 75 | 85 | 110 |
| D8 | 53 | 62 | 76 | 95 | 92 | 114 | 142 | 160 | 176 |
| D9 | 4xM4xL7 | 4xM5xL8 | 4xM5xL8 | 6xM6xL10 | 6xM6xL10 | 6xM8xL12.5 | 6xM8xL12.5 | 6xM8xL12.5 | 6xM10xL15 |
| D10 | 15.4 | 20.4 | 25.8 | 35.8 | 49.8 | 59.3 | 79.3 | 92.3 | 102.3 |
| D11 g6 | 62.9 | 72.9 | 87 | 107 | 103 | 127 | 158 | 178 | 198 |
| D12 | 62 | 72 | 86 | 106 | 104 | 128 | 160 | 180 | 200 |
| D13 k6 | 13 | 16 | 18 | 22 | 32 | 40 | 50 | 55 | 60 |
| D14 h7 | 63 | 73 | 88 | 108 | 135 | 165 | 205 | 235 | 275 |
| D16 | M4 | M5 | M5 | M8 | M12 | M16 | M16 | M16 | M20 |
| L1 | 65 | 75 | 90 | 110 | 140 | 170 | 210 | 240 | 280 |
| L2 | 19.5 | 30 | 35 | 40 | 50 | 60 | 75 | 85 | 110 |
| L3 | 13 | 14.5 | 15 | 15 | 15 | 15 | 20 | 25 | 25 |
| L4 | 2 | 2 | 2 | 2 | 2 | 2 | 2 | 2 | 2 |
| L5 | 16 | 25 | 28 | 32 | 45 | 50 | 70 | 80 | 100 |
| L6 | 2 | 2.5 | 3.5 | 4 | 2.5 | 5 | 2.5 | 2.5 | 5 |
| L7 | 47.5 | 54 | 62 | 72 | 87 | 102 | 127 | 147 | 167 |
| L8 | 67 | 84 | 97 | 112 | 137 | 162 | 202 | 232 | 277 |
| L9 | 4.5 | 4.8 | 4.8 | 7.2 | 10 | 12 | 12 | 12 | 15 |
| L10 | 10 | 12.5 | 12.5 | 19 | 28 | 36 | 36 | 36 | 42 |
| L11 | 27 | 30 | 36 | 44 | 55 | 67 | 85 | 95 | 110 |
| L12 | 19.5 | 30 | 35 | 40 | 50 | 60 | 75 | 85 | 110 |
| L13 | 13 | 15 | 15 | 15 | 15 | 15 | 20 | 25 | 25 |
| L14 | 2 | 2 | 2 | 2 | 2 | 2 | 2 | 2 | 2 |
| L15 | 16 | 25 | 28 | 32 | 45 | 50 | 70 | 80 | 100 |
| L16 | 2 | 2.5 | 3.5 | 4 | 2.5 | 5 | 2.5 | 2.5 | 5 |
| L17 | 6 | 8 | 8 | 8 | 10 | 10 | 10 | 10 | 10 |
| L18 | 43 | 52.5 | 55 | 60 | 60 | 70 | 90 | 105 | 120 |
| L19 | 4.5 | 4.8 | 4.8 | 7.2 | 10 | 12 | 12 | 12 | 15 |
| L20 | 10 | 12.5 | 12.5 | 19 | 28 | 36 | 36 | 36 | 42 |
| L21 | 75.5 | 90 | 100 | 115 | 130 | 155 | 195 | 225 | 260 |
| L22 | 95 | 120 | 135 | 155 | 180 | 215 | 270 | 310 | 370 |
| B1 h9 | 5 | 5 | 6 | 6 | 10 | 12 | 14 | 16 | 18 |
| B2 h9 | 5 | 5 | 6 | 6 | 10 | 12 | 14 | 16 | 18 |
| H1 | 15 | 18 | 20.5 | 24.5 | 35 | 43 | 53.5 | 59 | 64 |
| H2 | 15 | 18 | 20.5 | 24.5 | 35 | 43 | 53.5 | 59 | 64 |

产品规格 - AT/ATB 法兰型系列

减速机性能资料 (ATB系列的性能, 规范与AT系列相同)

| 规格 | 节数 | 减速比 ^A | AT065 FL | AT075 FL | AT090 FL | AT110 FL | AT140 FL | AT170 FL | AT210 FL | AT240 FL | AT280 FL | |
|---------------------------------------|--------|------------------|------------------|--------------|-----------|-----------|-----------|-----------|-----------|-----------|-----------|--------|
| | | | AT065 FL1 | AT075 FL1 | AT090 FL1 | AT110 FL1 | AT140 FL1 | AT170 FL1 | AT210 FL1 | AT240 FL1 | AT280 FL1 | |
| | | | AT065 FH | AT075 FH | AT090 FH | AT110 FH | AT140 FH | AT170 FH | AT210 FH | AT240 FH | AT280 FH | |
| | | | AT065 FC | AT075 FC | AT090 FC | AT110 FC | AT140 FC | AT170 FC | AT210 FC | AT240 FC | AT280 FC | |
| | | | AT065 FR1 | AT075 FR1 | AT090 FR1 | AT110 FR1 | AT140 FR1 | AT170 FR1 | AT210 FR1 | AT240 FR1 | AT280 FR1 | |
| 额定输出力矩 T_{2N} | 1 | 1 | 25 | 45 | 78 | 150 | 360 | 585 | 1,300 | 2,150 | 3,200 | |
| | | 1.5 | 25 | 45 | 78 | 150 | 360 | 585 | 1,300 | 2,150 | 3,200 | |
| | | 2 | 24 | 42 | 68 | 150 | 330 | 544 | 1,220 | 2,010 | 3,050 | |
| | | 3 | 18 | 33 | 54 | 120 | 270 | 450 | 1,020 | 1,650 | 2,850 | |
| | | 4 | 13 | 28 | 48 | 100 | 224 | 376 | 860 | 1,410 | 2,300 | |
| | | 5 | 12 | 25 | 40 | 85 | 196 | 320 | 740 | 1,210 | 2,000 | |
| | 2 | 7 | 12 | 12 | 33 | 91 | 91 | 91 | 195 | 358 | 358 | |
| | | 10 | 24 | 28 | 68 | 150 | 208 | 208 | 430 | 846 | 846 | |
| | | 15 | 18 | 33 | 54 | 120 | 270 | 312 | 645 | 1,269 | 1,269 | |
| | | 20 | 13 | 28 | 48 | 100 | 224 | 376 | 860 | 1,410 | 1,692 | |
| | | 25 | 12 | 25 | 40 | 85 | 196 | 320 | 740 | 1,210 | 2,000 | |
| | | 35 | 12 | 25 | 40 | 85 | 196 | 320 | 740 | 1,210 | 1,790 | |
| | 3 | 50 | 12 | 25 | 40 | 85 | 196 | 320 | 740 | 1,210 | 1,465 | |
| | | 75 | - | - | - | 120 | 210 | 312 | 585 | 1,269 | 1,269 | |
| | | 100 | - | - | - | 100 | 224 | 376 | 780 | 1,410 | 1,692 | |
| | | 125 | - | - | - | 85 | 196 | 320 | 740 | 1,210 | 2,000 | |
| | | 150 | - | - | - | 120 | 135 | 312 | 390 | 975 | 975 | |
| | | 200 | - | - | - | 100 | 180 | 376 | 520 | 1,300 | 1,300 | |
| | | 250 | - | - | - | 85 | 196 | 320 | 650 | 1,210 | 1,625 | |
| | 350 | - | - | - | 85 | 196 | 320 | 740 | 1,210 | 1,790 | | |
| | 500 | - | - | - | 85 | 196 | 320 | 740 | 1,210 | 1,465 | | |
| 最大加速力矩 T_{2B} | Nm | 1,2,3 | 1~500 1.5倍额定输出力矩 | | | | | | | | | |
| 额定输入转速 n_{1N} | rpm | 1 | 1~5 | 4,500 | 4,000 | 3,300 | 2,600 | 2,000 | 2,000 | 1,300 | 1,200 | 1,000 |
| | | 2 | 7~50 | 4,500 | 4,500 | 4,000 | 3,600 | 3,600 | 3,600 | 3,000 | 2,500 | 2,500 |
| | | 3 | 75~500 | - | - | - | 4,500 | 4,500 | 4,500 | 4,000 | 3,600 | 3,600 |
| 容许加速输入转速 n_{1B} | rpm | 1 | 1~5 | 7,500 | 6,500 | 5,500 | 4,500 | 3,500 | 3,000 | 2,200 | 2,000 | 1,700 |
| | | 2 | 7~50 | 8,000 | 8,000 | 6,000 | 6,000 | 6,000 | 6,000 | 4,800 | 3,600 | 3,600 |
| | | 3 | 75~500 | - | - | - | 8,000 | 8,000 | 6,000 | 6,000 | 6,000 | 6,000 |
| 背隙 ^B | arcmin | 1 | 1~5 | ≤6 | ≤6 | ≤6 | ≤6 | ≤6 | ≤6 | ≤6 | ≤6 | |
| | | 2 | 7~50 | ≤8 | ≤8 | ≤8 | ≤8 | ≤8 | ≤8 | ≤8 | ≤8 | |
| | | 3 | 75~500 | - | - | - | ≤10 | ≤10 | ≤10 | ≤10 | ≤10 | ≤10 |
| 容许径向力 F_{2rB} ^C 输出轴d2 | N | 1,2,3 | 1~500 | 900 | 1,100 | 1,700 | 2,700 | 4,800 | 6,600 | 11,500 | 16,000 | 18,000 |
| 容许轴向力 F_{2aB} ^C 输出轴d2 | N | 1,2,3 | 1~500 | 450 | 550 | 850 | 1,350 | 2,400 | 3,300 | 5,750 | 8,500 | 9,000 |
| 效率 η | % | 1 | 1~5 | ≥98% | | | | | | | | |
| | | 2,3 | 7~500 | ≥94% | | | | | | | | |
| 使用温度 | °C | 1,2,3 | 1~500 | -10°C ~ 90°C | | | | | | | | |
| 润滑 | | | | 合成润滑脂 | | | | | | | | |
| 噪音值 ^D | dB (A) | 1,2,3 | 1~500 | ≤71 | ≤72 | ≤76 | ≤77 | ≤78 | ≤79 | ≤81 | ≤83 | ≤84 |

减速机转动惯量 (ATB系列的性能, 规范与AT系列相同)

| 规格 | Stage | 减速比 ^A | AT065 FL | AT075 FL | AT090 FL | AT110 FL | AT140 FL | AT170 FL | AT210 FL | AT240 FL | AT280 FL |
|------------|-------|------------------|-----------|-----------|-----------|-----------|-----------|-----------|-----------|-----------|-----------|
| | | | AT065 FL1 | AT075 FL1 | AT090 FL1 | AT110 FL1 | AT140 FL1 | AT170 FL1 | AT210 FL1 | AT240 FL1 | AT280 FL1 |
| | | | AT065 FH | AT075 FH | AT090 FH | AT110 FH | AT140 FH | AT170 FH | AT210 FH | AT240 FH | AT280 FH |
| | | | AT065 FC | AT075 FC | AT090 FC | AT110 FC | AT140 FC | AT170 FC | AT210 FC | AT240 FC | AT280 FC |
| | | | AT065 FR1 | AT075 FR1 | AT090 FR1 | AT110 FR1 | AT140 FR1 | AT170 FR1 | AT210 FR1 | AT240 FR1 | AT280 FR1 |
| 转动惯量 J_1 | 1 | 1 | 0.51 | 1.30 | 3.14 | 7.62 | 23.54 | 59.09 | 195.96 | 365.38 | 787.63 |
| | | 1.5 | 0.46 | 1.15 | 2.80 | 6.65 | 19.34 | 49.38 | 156.02 | 279.62 | 584.28 |
| | | 2 | 0.44 | 1.10 | 2.68 | 6.23 | 17.72 | 45.44 | 140.80 | 245.78 | 500.26 |
| | | 3 | 0.43 | 1.09 | 2.64 | 6.08 | 17.16 | 44.11 | 135.51 | 233.75 | 471.56 |
| | | 4 | 0.43 | 1.08 | 2.63 | 6.05 | 17.03 | 43.79 | 134.14 | 230.77 | 464.76 |
| | | 5 | 0.43 | 1.08 | 2.63 | 6.04 | 16.99 | 43.69 | 133.71 | 229.71 | 462.08 |
| | 2 | 7 | 0.15 | 0.15 | 0.50 | 2.79 | 2.79 | 2.79 | 9.91 | 29.26 | 29.26 |
| | | 10 | 0.15 | 0.15 | 0.50 | 2.80 | 2.80 | 2.80 | 9.96 | 29.43 | 29.43 |
| | | 15 | 0.15 | 0.15 | 0.50 | 2.80 | 2.80 | 2.80 | 9.96 | 29.43 | 29.43 |
| | | 20 | 0.15 | 0.15 | 0.50 | 2.80 | 2.80 | 2.80 | 9.96 | 29.43 | 29.43 |
| | | 25 | 0.15 | 0.15 | 0.50 | 2.80 | 2.80 | 2.80 | 9.96 | 29.43 | 29.43 |
| | | 35 | 0.15 | 0.15 | 0.50 | 2.79 | 2.79 | 2.79 | 9.91 | 29.26 | 29.26 |
| | 3 | 50 | 0.15 | 0.15 | 0.50 | 2.79 | 2.79 | 2.79 | 9.89 | 29.20 | 29.20 |
| | | 75 | - | - | - | 0.15 | 0.15 | 0.50 | 0.50 | 2.80 | 2.80 |
| | | 100 | - | - | - | 0.15 | 0.15 | 0.50 | 0.50 | 2.80 | 2.80 |
| | | 125 | - | - | - | 0.15 | 0.15 | 0.50 | 0.50 | 2.80 | 2.80 |
| | | 150 | - | - | - | 0.15 | 0.15 | 0.50 | 0.50 | 2.79 | 2.79 |
| | | 200 | - | - | - | 0.15 | 0.15 | 0.50 | 0.50 | 2.79 | 2.79 |
| | | 250 | - | - | - | 0.15 | 0.15 | 0.50 | 0.50 | 2.79 | 2.79 |
| | 350 | - | - | - | 0.15 | 0.15 | 0.50 | 0.50 | 2.79 | 2.79 | |
| | 500 | - | - | - | 0.15 | 0.15 | 0.50 | 0.50 | 2.79 | 2.79 | |

重量

| 型号 | 节数 | 减速比 ^A | AT065 | AT075 | AT090 | AT110 | AT140 | AT170 | AT210 | AT240 | AT280 |
|--------|----|------------------|-------|-------|-------|-------|-------|-------|-------|-------|-------|
| FL 系列 | 1 | 1~5 | 2.8 | 4.4 | 7.1 | 12.1 | 20.9 | 36.1 | 69.4 | 101.2 | 158.3 |
| | 2 | 7~50 | 3.2 | 4.8 | 8.1 | 14.3 | 24.2 | 38.5 | 74.1 | 112.4 | 171.0 |
| | 3 | 75~500 | - | - | - | 13.9 | 23.7 | 38.8 | 73.4 | 110.2 | 168.7 |
| FI1 系列 | 1 | 1~5 | 2.7 | 4.3 | 7.1 | 11.9 | 20.3 | 35.5 | 68.3 | 99.6 | 156.0 |
| | 2 | 7~50 | 3.2 | 4.8 | 8.0 | 14.2 | 23.9 | 37.9 | 73.0 | 110.8 | 168.6 |
| | 3 | 75~500 | - | - | - | 13.8 | 23.4 | 38.2 | 72.3 | 108.6 | 166.4 |
| FH 系列 | 1 | 1~5 | 2.6 | 4.1 | 6.7 | 11.4 | 18.9 | 32.9 | 63.2 | 92.5 | 146.0 |
| | 2 | 7~50 | 3.1 | 4.6 | 7.7 | 13.6 | 22.4 | 35.3 | 67.9 | 103.7 | 158.7 |
| | 3 | 75~500 | - | - | - | 13.3 | 21.9 | 35.6 | 67.2 | 101.5 | 156.5 |
| FC 系列 | 1 | 1~5 | 2.9 | 4.4 | 7.2 | 11.8 | 20.4 | 35.0 | 66.5 | 96.0 | 151.7 |
| | 2 | 7~50 | 3.3 | 4.9 | 8.2 | 14.1 | 24.1 | 37.4 | 71.2 | 107.2 | 164.4 |
| | 3 | 75~500 | - | - | - | 13.7 | 23.5 | 37.5 | 70.5 | 105.0 | 162.2 |
| FR1 系列 | 1 | 1~5 | 2.7 | 4.3 | 7.1 | 11.9 | 20.3 | 35.5 | 68.3 | 99.6 | 156.0 |
| | 2 | 7~50 | 3.2 | 4.8 | 8.0 | 14.2 | 23.9 | 37.9 | 73.0 | 110.8 | 168.6 |
| | 3 | 75~500 | - | - | - | 13.8 | 23.4 | 38.2 | 72.3 | 108.6 | 166.4 |

A. 减速比 ($i=N_{in}/N_{out}$)。

B. 背隙值是在2%额定力矩 T_{2N} 的扭力下测得。

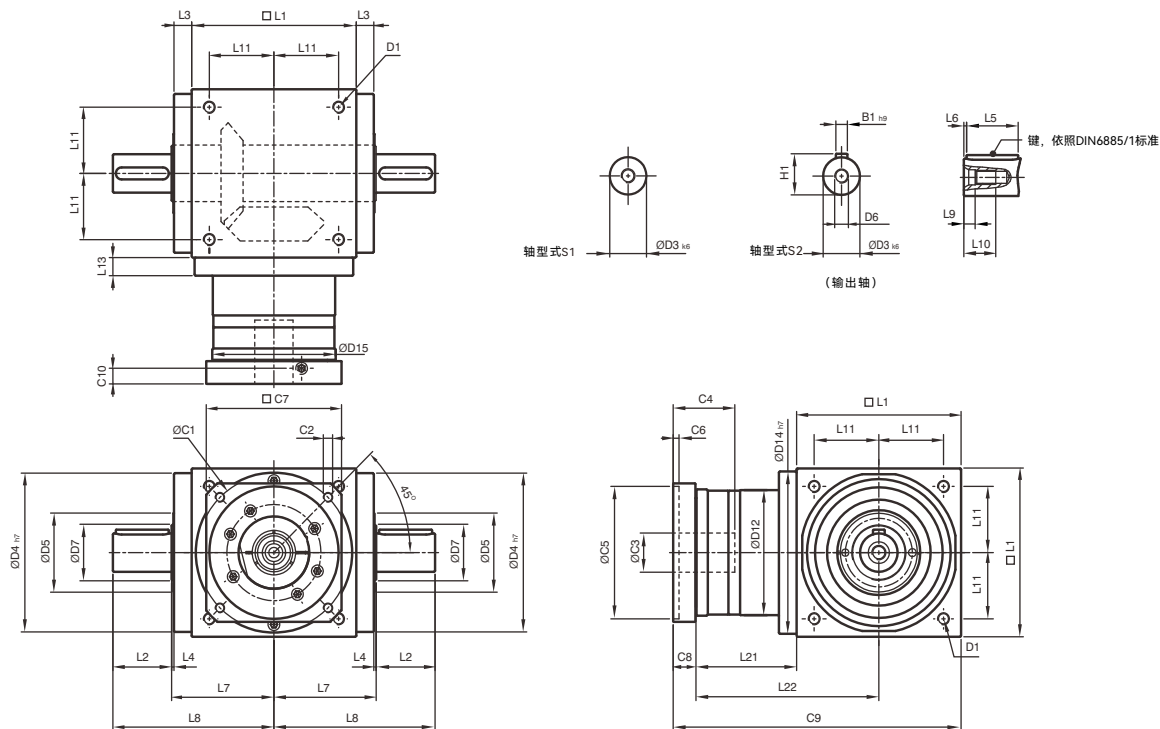
C. 容许加速输入转速 n_{1B} 作用于输出轴中心位置。

D. 噪音值是在无负载状态, 减速机以1,500rpm, 减速比5(单节)或减速比50(双节)或减速比500(三节)时量测取得。

或在相应的额定输入速度下采用更大模型尺寸的数据作为参考。

低速比或者高转速状态下, 值将会更高。

AT-FL / ATB-FL 系列尺寸 (单节, 减速比 $i=1\sim5$)



*ATB系列的尺寸与AT系列相同。

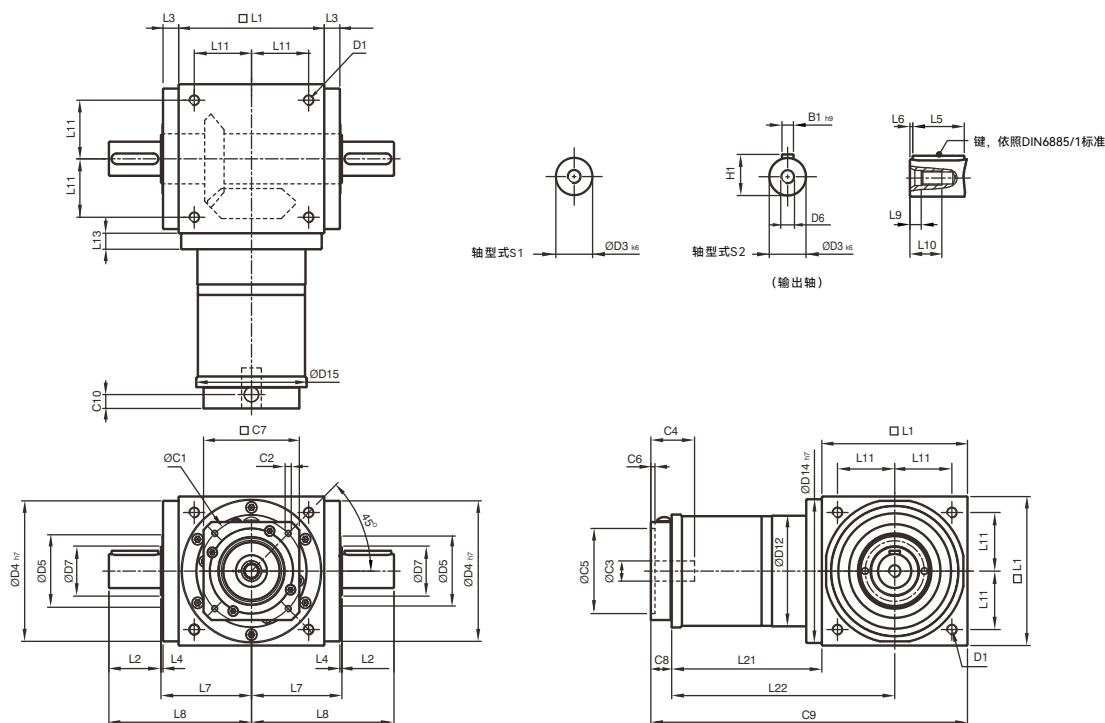
[单位: mm]

| 尺寸 | AT065 FL | AT075 FL | AT090 FL | AT110 FL | AT140 FL | AT170 FL | AT210 FL | AT240 FL | AT280 FL |
|------------------|------------------------|----------------------------------|----------|----------|----------|----------|----------|----------|----------|
| D1 | M4 | M6 | M6 | M8 | M10 | M12 | M16 | M16 | M16 |
| D3 k6 | 13 | 16 | 18 | 22 | 32 | 40 | 50 | 55 | 60 |
| D4 h7 | 63 | 73 | 88 | 108 | 135 | 165 | 205 | 235 | 275 |
| D5 | 31 | 35 | 43 | 53 | 68 | 83 | 104 | 124 | 144 |
| D6 | M4 | M5 | M5 | M8 | M12 | M16 | M16 | M16 | M20 |
| D7 | 21 | 22 | 28 | 33 | 47 | 55 | 75 | 85 | 110 |
| D12 | 62 | 72 | 86 | 106 | 104 | 128 | 160 | 180 | 200 |
| D14 h7 | 63 | 73 | 88 | 108 | 135 | 165 | 205 | 235 | 275 |
| D15 | 62.9 | 72.9 | 87 | 107 | 105 | 130 | 158 | 178 | 198 |
| L1 | 65 | 75 | 90 | 110 | 140 | 170 | 210 | 240 | 280 |
| L2 | 19.5 | 30 | 35 | 40 | 50 | 60 | 75 | 85 | 110 |
| L3 | 13 | 14.5 | 15 | 15 | 15 | 15 | 20 | 25 | 25 |
| L4 | 2 | 2 | 2 | 2 | 2 | 2 | 2 | 2 | 2 |
| L5 | 16 | 25 | 28 | 32 | 45 | 50 | 70 | 80 | 100 |
| L6 | 2 | 2.5 | 3.5 | 4 | 2.5 | 5 | 2.5 | 2.5 | 5 |
| L7 | 47.5 | 54 | 62 | 72 | 87 | 102 | 127 | 147 | 167 |
| L8 | 67 | 84 | 97 | 112 | 137 | 162 | 202 | 232 | 277 |
| L9 | 4.5 | 4.8 | 4.8 | 7.2 | 10 | 12 | 12 | 12 | 15 |
| L10 | 10 | 12.5 | 12.5 | 19 | 28 | 36 | 36 | 36 | 42 |
| L11 | 27 | 30 | 36 | 44 | 55 | 67 | 85 | 95 | 110 |
| L13 | 13 | 15 | 15 | 15 | 15 | 15 | 20 | 25 | 25 |
| L21 | 49 | 60.5 | 63 | 69.5 | 85.5 | 95 | 130 | 144.5 | 135 |
| L22 | 81.5 | 98 | 108 | 124.5 | 155.5 | 180 | 235 | 264.5 | 275 |
| C1 ¹ | 46 | 70 | 100 | 100 | 130 | 165 | 215 | 215 | 235 |
| C2 ¹ | M4 | M5 | M6 | M6 | M8 | M10 | M12 | M12 | M12 |
| C3 ¹ | ≤11 / ≤12 ² | ≤14 / ≤15.875 / ≤16 ² | ≤19 | ≤24 | ≤32 | ≤38 | ≤42 | ≤48 | ≤55 |
| C4 ¹ | 30 | 34 | 40 | 40 | 50 | 60 | 85 | 85 | 116 |
| C5 ¹ | 30 | 50 | 80 | 80 | 110 | 130 | 180 | 180 | 200 |
| C6 ¹ | 3.5 | 8 | 4 | 4 | 5 | 6 | 6 | 6 | 6 |
| C7 ¹ | 42 | 60 | 90 | 90 | 115 | 142 | 190 | 190 | 220 |
| C8 ¹ | 19.5 | 19 | 17 | 17 | 19.5 | 22.5 | 29 | 29 | 63 |
| C9 ¹ | 133.5 | 154.5 | 170 | 196.5 | 245 | 287.5 | 369 | 413.5 | 478 |
| C10 ¹ | 13.25 | 13.5 | 10.75 | 10.75 | 13 | 15 | 20.75 | 20.75 | 53.5 |
| B1 h9 | 5 | 5 | 6 | 6 | 10 | 12 | 14 | 16 | 18 |
| H1 | 15 | 18 | 20.5 | 24.5 | 35 | 43 | 53.5 | 59 | 64 |

1. C1~C10 为公制马达规范尺寸。请参考APEX网页“减速机选用”功能，来查看您的马达安装搭配。

2. AT065 FLM1 提供 C3 ≤12 选择; AT075 FLM1 提供 C3 ≤16 选择; AT075 FLM2 提供 C3 ≤15.875 选择。

AT-FL / ATB-FL系列尺寸 (双节, 减速比 $i=7\sim 50$)



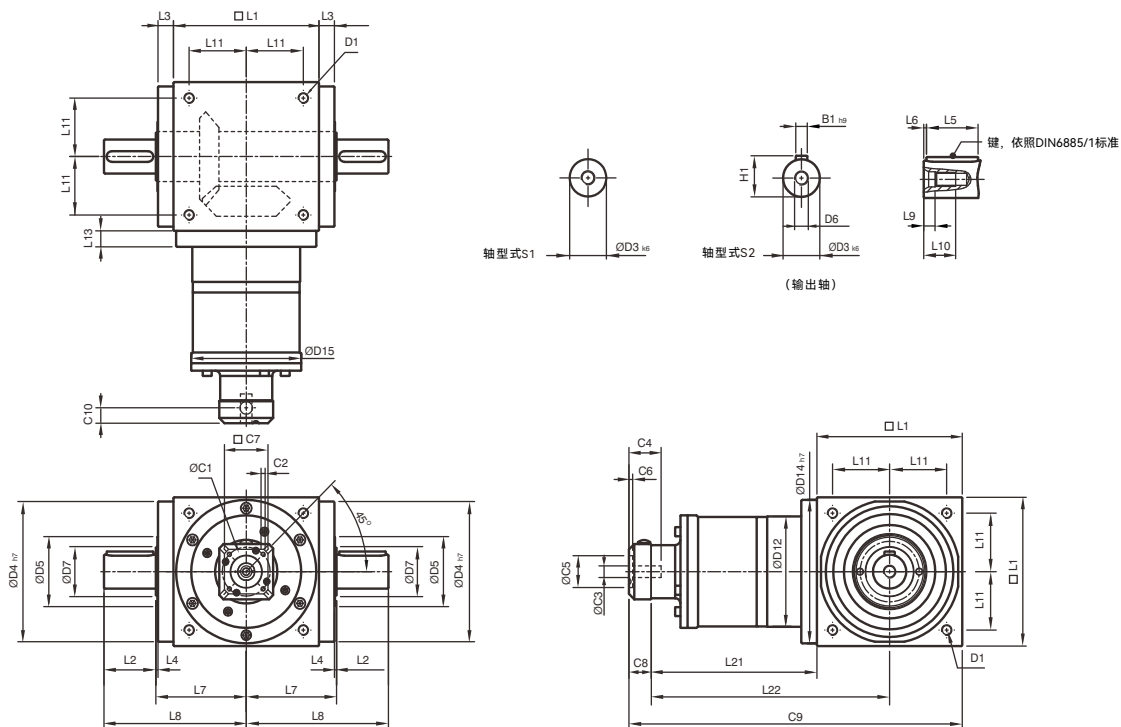
*ATB系列的尺寸与AT系列相同。

[单位: mm]

| 尺寸 | AT065 FL | AT075 FL | AT090 FL | AT110 FL | AT140 FL | AT170 FL | AT210 FL | AT240 FL | AT280 FL |
|--------------------|----------|----------|----------|----------|----------|----------|----------|----------|----------|
| D1 | M4 | M6 | M6 | M8 | M10 | M12 | M16 | M16 | M16 |
| D3 k ₆ | 13 | 16 | 18 | 22 | 32 | 40 | 50 | 55 | 60 |
| D4 h ₇ | 63 | 73 | 88 | 108 | 135 | 165 | 205 | 235 | 275 |
| D5 | 31 | 35 | 43 | 53 | 68 | 83 | 104 | 124 | 144 |
| D6 | M4 | M5 | M5 | M8 | M12 | M16 | M16 | M16 | M20 |
| D7 | 21 | 22 | 28 | 33 | 47 | 55 | 75 | 85 | 110 |
| D12 | 62 | 72 | 86 | 106 | 104 | 128 | 160 | 180 | 200 |
| D14 h ₇ | 63 | 73 | 88 | 108 | 135 | 165 | 205 | 235 | 275 |
| D15 | 62.9 | 72.9 | 87 | 107 | 106 | 130 | 158 | 178 | 198 |
| L1 | 65 | 75 | 90 | 110 | 140 | 170 | 210 | 240 | 280 |
| L2 | 19.5 | 30 | 35 | 40 | 50 | 60 | 75 | 85 | 110 |
| L3 | 13 | 14.5 | 15 | 15 | 15 | 15 | 20 | 25 | 25 |
| L4 | 2 | 2 | 2 | 2 | 2 | 2 | 2 | 2 | 2 |
| L5 | 16 | 25 | 28 | 32 | 45 | 50 | 70 | 80 | 100 |
| L6 | 2 | 2.5 | 3.5 | 4 | 2.5 | 5 | 2.5 | 2.5 | 5 |
| L7 | 47.5 | 54 | 62 | 72 | 87 | 102 | 127 | 147 | 167 |
| L8 | 67 | 84 | 97 | 112 | 137 | 162 | 202 | 232 | 277 |
| L9 | 4.5 | 4.8 | 4.8 | 7.2 | 10 | 12 | 12 | 12 | 15 |
| L10 | 10 | 12.5 | 12.5 | 19 | 28 | 36 | 36 | 36 | 42 |
| L11 | 27 | 30 | 36 | 44 | 55 | 67 | 85 | 95 | 110 |
| L13 | 13 | 15 | 15 | 15 | 15 | 15 | 20 | 25 | 25 |
| L21 | 75 | 84.5 | 99 | 122 | 144.5 | 157.5 | 206.5 | 239 | 248 |
| L22 | 107.5 | 122 | 144 | 177 | 214.5 | 242.5 | 311.5 | 359 | 388 |
| C1 ³ | 46 | 46 | 70 | 100 | 100 | 100 | 130 | 165 | 165 |
| C2 ³ | M4 | M4 | M5 | M6 | M6 | M6 | M8 | M10 | M10 |
| C3 ³ | ≤12 | ≤12 | ≤16 | ≤24 | ≤24 | ≤24 | ≤32 | ≤38 | ≤38 |
| C4 ³ | 30 | 30 | 34 | 40 | 40 | 40 | 50 | 60 | 60 |
| C5 ³ | 30 | 30 | 50 | 80 | 80 | 80 | 110 | 130 | 130 |
| C6 ³ | 3.5 | 3.5 | 8 | 4 | 4 | 4 | 5 | 6 | 6 |
| C7 ³ | 42 | 42 | 60 | 92 | 92 | 92 | 115 | 142 | 142 |
| C8 ³ | 21.5 | 21.5 | 21.5 | 20 | 20 | 20 | 24 | 31 | 31 |
| C9 ³ | 161.5 | 181 | 210.5 | 252 | 304.5 | 347.5 | 440.5 | 510 | 559 |
| C10 ³ | 14.5 | 14.5 | 15.5 | 13 | 13 | 13 | 16 | 21 | 21 |
| B1 h ₉ | 5 | 5 | 6 | 6 | 10 | 12 | 14 | 16 | 18 |
| H1 | 15 | 18 | 20.5 | 24.5 | 35 | 43 | 53.5 | 59 | 64 |

3. C1~C10 为公制马达规范尺寸。请参考APEX网页“减速机选用”功能，来查看您的马达安装搭配。

AT-FL / ATB-FL系列尺寸 (三节, 减速比 i=75~500)



*ATB系列的尺寸与AT系列相同。

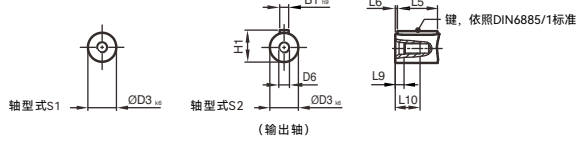
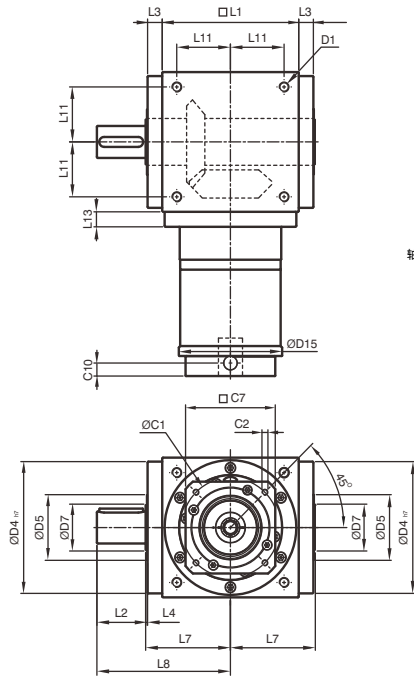
[单位: mm]

| 尺寸 | AT110 FL | AT140 FL | AT170 FL | AT210 FL | AT240 FL | AT280 FL |
|------------------|----------|----------|----------|----------|----------|----------|
| D1 | M8 | M10 | M12 | M16 | M16 | M16 |
| D3 k6 | 22 | 32 | 40 | 50 | 55 | 60 |
| D4 h7 | 108 | 135 | 165 | 205 | 235 | 275 |
| D5 | 53 | 68 | 83 | 104 | 124 | 144 |
| D6 | M8 | M12 | M16 | M16 | M16 | M20 |
| D7 | 33 | 47 | 55 | 75 | 85 | 110 |
| D12 | 106 | 104 | 128 | 160 | 180 | 200 |
| D14 h7 | 108 | 135 | 165 | 205 | 235 | 275 |
| D15 | 107 | 106 | 130 | 158 | 178 | 198 |
| L1 | 110 | 140 | 170 | 210 | 240 | 280 |
| L2 | 40 | 50 | 60 | 75 | 85 | 110 |
| L3 | 15 | 15 | 15 | 20 | 25 | 25 |
| L4 | 2 | 2 | 2 | 2 | 2 | 2 |
| L5 | 32 | 45 | 50 | 70 | 80 | 100 |
| L6 | 4 | 2.5 | 5 | 2.5 | 2.5 | 5 |
| L7 | 72 | 87 | 102 | 127 | 147 | 167 |
| L8 | 112 | 137 | 162 | 202 | 232 | 277 |
| L9 | 7.2 | 10 | 12 | 12 | 12 | 15 |
| L10 | 19 | 28 | 36 | 36 | 36 | 42 |
| L11 | 44 | 55 | 67 | 85 | 95 | 110 |
| L13 | 15 | 15 | 15 | 20 | 25 | 25 |
| L21 | 136.5 | 159.5 | 183.5 | 226 | 269 | 278 |
| L22 | 191.5 | 229.5 | 268.5 | 331 | 389 | 418 |
| C1 ⁴ | 46 | 46 | 70 | 70 | 100 | 100 |
| C2 ⁴ | M4 | M4 | M5 | M5 | M6 | M6 |
| C3 ⁴ | ≤12 | ≤12 | ≤16 | ≤16 | ≤24 | ≤24 |
| C4 ⁴ | 30 | 30 | 34 | 34 | 40 | 40 |
| C5 ⁴ | 30 | 30 | 50 | 50 | 80 | 80 |
| C6 ⁴ | 3.5 | 3.5 | 8 | 8 | 4 | 4 |
| C7 ⁴ | 42 | 42 | 60 | 60 | 92 | 92 |
| C8 ⁴ | 21.5 | 21.5 | 21.5 | 21.5 | 20 | 20 |
| C9 ⁴ | 268 | 321 | 375 | 457.5 | 529 | 578 |
| C10 ⁴ | 14.5 | 14.5 | 15.5 | 15.5 | 13 | 13 |
| B1 h9 | 6 | 10 | 12 | 14 | 16 | 18 |
| H1 | 24.5 | 35 | 43 | 53.5 | 59 | 64 |

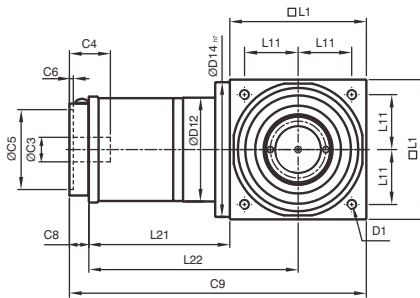
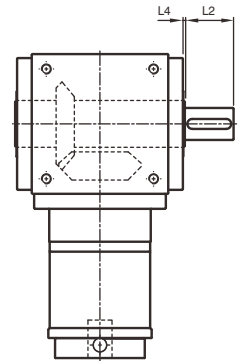
AT-FL1/FR1 | ATB-FL1/FR1 系列尺寸

(双节, 减速比 $i=7\sim 50$)

AT-FL1 / ATB-FL1



AT-FR1 / ATB-FR1

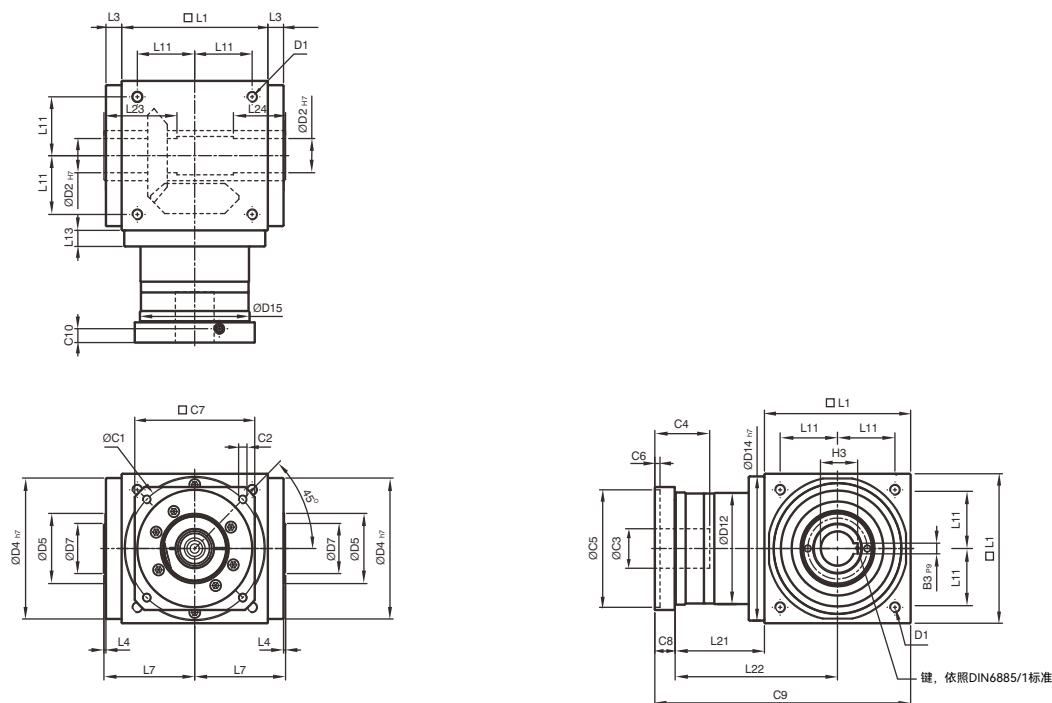


*ATB系列的尺寸与AT系列相同。

[单位: mm]

| 尺寸 | AT065 FL1/FR1 | AT075 FL1/FR1 | AT090 FL1/FR1 | AT110 FL1/FR1 | AT140 FL1/FR1 | AT170 FL1/FR1 | AT210 FL1/FR1 | AT240 FL1/FR1 | AT280 FL1/FR1 |
|------------------|---------------|---------------|---------------|---------------|---------------|---------------|---------------|---------------|---------------|
| D1 | M4 | M6 | M6 | M8 | M10 | M12 | M16 | M16 | M16 |
| D3 k6 | 13 | 16 | 18 | 22 | 32 | 40 | 50 | 55 | 60 |
| D4 h7 | 63 | 73 | 88 | 108 | 135 | 165 | 205 | 235 | 275 |
| D5 | 31 | 35 | 43 | 53 | 68 | 83 | 104 | 124 | 144 |
| D6 | M4 | M5 | M5 | M8 | M12 | M16 | M16 | M16 | M20 |
| D7 | 21 | 22 | 28 | 33 | 47 | 55 | 75 | 85 | 110 |
| D12 | 62 | 72 | 86 | 106 | 104 | 128 | 160 | 180 | 200 |
| D14 h7 | 63 | 73 | 88 | 108 | 135 | 165 | 205 | 235 | 275 |
| D15 | 62.9 | 72.9 | 87 | 107 | 106 | 130 | 158 | 178 | 198 |
| L1 | 65 | 75 | 90 | 110 | 140 | 170 | 210 | 240 | 280 |
| L2 | 19.5 | 30 | 35 | 40 | 50 | 60 | 75 | 85 | 110 |
| L3 | 13 | 14.5 | 15 | 15 | 15 | 15 | 20 | 25 | 25 |
| L4 | 2 | 2 | 2 | 2 | 2 | 2 | 2 | 2 | 2 |
| L5 | 16 | 25 | 28 | 32 | 45 | 50 | 70 | 80 | 100 |
| L6 | 2 | 2.5 | 3.5 | 4 | 2.5 | 5 | 2.5 | 2.5 | 5 |
| L7 | 47.5 | 54 | 62 | 72 | 87 | 102 | 127 | 147 | 167 |
| L8 | 67 | 84 | 97 | 112 | 137 | 162 | 202 | 232 | 277 |
| L9 | 4.5 | 4.8 | 4.8 | 7.2 | 10 | 12 | 12 | 12 | 15 |
| L10 | 10 | 12.5 | 12.5 | 19 | 28 | 36 | 36 | 36 | 42 |
| L11 | 27 | 30 | 36 | 44 | 55 | 67 | 85 | 95 | 110 |
| L13 | 13 | 15 | 15 | 15 | 15 | 15 | 20 | 25 | 25 |
| L21 | 75 | 84.5 | 99 | 122 | 144.5 | 157.5 | 206.5 | 239 | 248 |
| L22 | 107.5 | 122 | 144 | 177 | 214.5 | 242.5 | 311.5 | 359 | 388 |
| C1 ⁷ | 46 | 46 | 70 | 100 | 100 | 100 | 130 | 165 | 165 |
| C2 ⁷ | M4 | M4 | M5 | M6 | M6 | M6 | M8 | M10 | M10 |
| C3 ⁷ | ≤12 | ≤12 | ≤16 | ≤24 | ≤24 | ≤24 | ≤32 | ≤38 | ≤38 |
| C4 ⁷ | 30 | 30 | 34 | 40 | 40 | 40 | 50 | 60 | 60 |
| C5 ⁷ | 30 | 30 | 50 | 80 | 80 | 80 | 110 | 130 | 130 |
| C6 ⁷ | 3.5 | 3.5 | 8 | 4 | 4 | 4 | 5 | 6 | 6 |
| C7 ⁷ | 42 | 42 | 60 | 92 | 92 | 92 | 115 | 142 | 142 |
| C8 ⁷ | 21.5 | 21.5 | 21.5 | 20 | 20 | 20 | 24 | 31 | 31 |
| C9 ⁷ | 161.5 | 181 | 210.5 | 252 | 304.5 | 347.5 | 440.5 | 510 | 559 |
| C10 ⁷ | 14.55 | 14.5 | 15.5 | 13 | 13 | 13 | 16 | 21 | 21 |
| B1 h9 | 5 | 5 | 6 | 6 | 10 | 12 | 14 | 16 | 18 |
| H1 | 15 | 18 | 20.5 | 24.5 | 35 | 43 | 53.5 | 59 | 64 |

AT-FH / ATB-FH系列尺寸 (单节, 减速比 i=1~5)



*ATB系列的尺寸与AT系列相同。

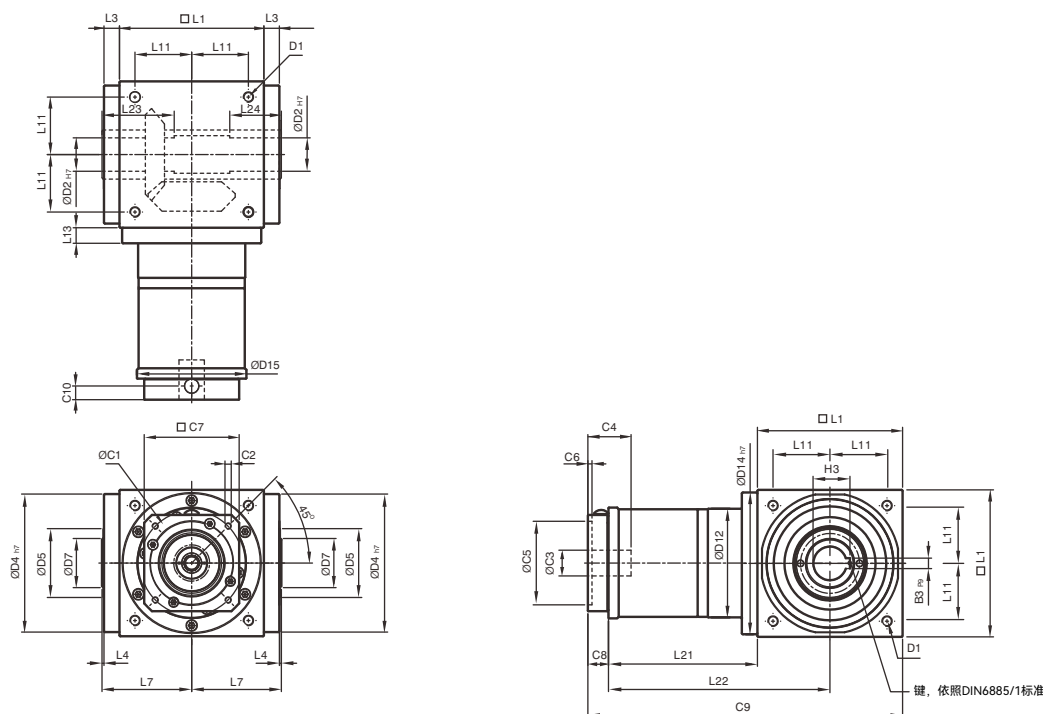
[单位: mm]

| 尺寸 | AT065FH | AT075FH | AT090FH | AT110FH | AT140FH | AT170FH | AT210FH | AT240FH | AT280FH |
|-------------------|-------------------------|-----------------------------------|---------|---------|---------|---------|---------|---------|---------|
| D1 | M4 | M6 | M6 | M8 | M10 | M12 | M16 | M16 | M16 |
| D2 _{H7} | 13 | 14 | 18 | 22 | 32 | 40 | 50 | 55 | 60 |
| D4 _{h7} | 63 | 73 | 88 | 108 | 135 | 165 | 205 | 235 | 275 |
| D5 | 31 | 35 | 43 | 53 | 68 | 83 | 104 | 124 | 144 |
| D7 | 21 | 22 | 28 | 33 | 47 | 55 | 75 | 85 | 110 |
| D12 | 62 | 72 | 86 | 106 | 104 | 128 | 160 | 180 | 200 |
| D14 _{h7} | 63 | 73 | 88 | 108 | 135 | 165 | 205 | 235 | 275 |
| D15 | 62.9 | 72.9 | 87 | 107 | 105 | 130 | 158 | 178 | 198 |
| L1 | 65 | 75 | 90 | 110 | 140 | 170 | 210 | 240 | 280 |
| L3 | 13 | 14.5 | 15 | 15 | 15 | 15 | 20 | 25 | 25 |
| L4 | 2 | 2 | 2 | 2 | 2 | 2 | 2 | 2 | 2 |
| L7 | 47.5 | 54 | 62 | 72 | 87 | 102 | 127 | 147 | 167 |
| L11 | 27 | 30 | 36 | 44 | 55 | 67 | 85 | 95 | 110 |
| L13 | 13 | 15 | 15 | 15 | 15 | 15 | 20 | 25 | 25 |
| L21 | 49 | 60.5 | 63 | 69.5 | 85.5 | 95 | 130 | 144.5 | 135 |
| L22 | 81.5 | 98 | 108 | 124.5 | 155.5 | 180 | 235 | 264.5 | 275 |
| L23 | 40 | 47 | 52 | 53 | 70 | 80 | 95 | 115 | 115 |
| L24 | 30 | 32 | 35 | 35 | 50 | 55 | 65 | 80 | 80 |
| C1 ⁹ | 46 | 70 | 100 | 100 | 130 | 165 | 215 | 215 | 235 |
| C2 ⁹ | M4 | M5 | M6 | M6 | M8 | M10 | M12 | M12 | M12 |
| C3 ⁹ | ≤11 / ≤12 ¹⁰ | ≤14 / ≤15.875 / ≤16 ¹⁰ | ≤19 | ≤24 | ≤32 | ≤38 | ≤42 | ≤48 | ≤55 |
| C4 ⁹ | 30 | 34 | 40 | 40 | 50 | 60 | 85 | 85 | 116 |
| C5 ⁹ | 30 | 50 | 80 | 80 | 110 | 130 | 180 | 180 | 200 |
| C6 ⁹ | 3.5 | 8 | 4 | 4 | 5 | 6 | 6 | 6 | 6 |
| C7 ⁹ | 42 | 60 | 90 | 90 | 115 | 142 | 190 | 190 | 220 |
| C8 ⁹ | 19.5 | 19 | 17 | 17 | 19.5 | 22.5 | 29 | 29 | 63 |
| C9 ⁹ | 133.5 | 154.5 | 170 | 196.5 | 245 | 287.5 | 369 | 413.5 | 478 |
| C10 ⁹ | 13.25 | 13.5 | 10.75 | 10.75 | 13 | 15 | 20.75 | 20.75 | 53.5 |
| B3 _{P9} | 5 | 5 | 6 | 6 | 10 | 12 | 14 | 16 | 18 |
| H3 | 15.3 | 16.3 | 20.8 | 24.8 | 35.3 | 43.3 | 53.8 | 59.3 | 64.4 |

9. C1~C10 为公制马达规范尺寸。请参考APEX网页“减速机选用”功能, 来查看您的马达安装搭配。

10. AT065FHM1 提供 C3 ≤12 选择; AT075FHM1 提供 C3 ≤16 选择; AT075FHM2 提供 C3 ≤15.875 选择。

AT-FH / ATB-FH系列尺寸 (双节, 减速比 $i=7\sim50$)



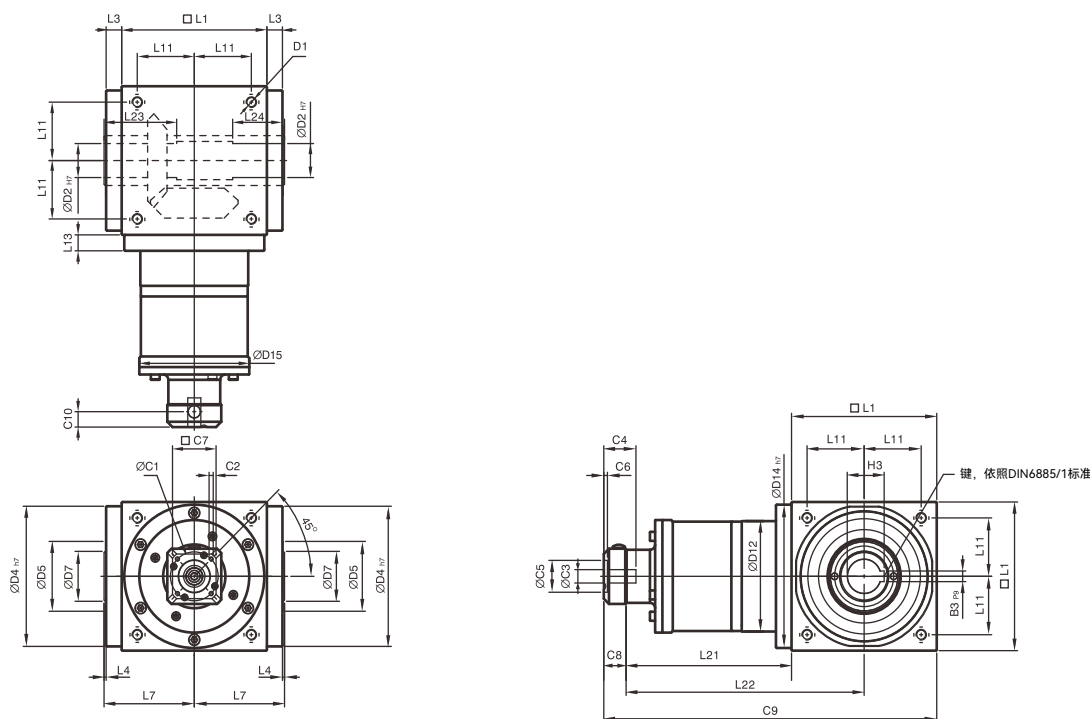
*ATB系列的尺寸与AT系列相同。

[单位: mm]

| 尺寸 | AT065FH | AT075FH | AT090FH | AT110FH | AT140FH | AT170FH | AT210FH | AT240FH | AT280FH |
|-------------------|---------|---------|---------|---------|---------|---------|---------|---------|---------|
| D1 | M4 | M6 | M6 | M8 | M10 | M12 | M16 | M16 | M16 |
| D2 _{H7} | 13 | 14 | 18 | 22 | 32 | 40 | 50 | 55 | 60 |
| D4 _{h7} | 63 | 73 | 88 | 108 | 135 | 165 | 205 | 235 | 275 |
| D5 | 31 | 35 | 43 | 53 | 68 | 83 | 104 | 124 | 144 |
| D7 | 21 | 22 | 28 | 33 | 47 | 55 | 75 | 85 | 110 |
| D12 | 62 | 72 | 86 | 106 | 104 | 128 | 160 | 180 | 200 |
| D14 _{h7} | 63 | 73 | 88 | 108 | 135 | 165 | 205 | 235 | 275 |
| D15 | 62.9 | 72.9 | 87 | 107 | 106 | 130 | 158 | 178 | 198 |
| L1 | 65 | 75 | 90 | 110 | 140 | 170 | 210 | 240 | 280 |
| L3 | 13 | 14.5 | 15 | 15 | 15 | 15 | 20 | 25 | 25 |
| L4 | 2 | 2 | 2 | 2 | 2 | 2 | 2 | 2 | 2 |
| L7 | 47.5 | 54 | 62 | 72 | 87 | 102 | 127 | 147 | 167 |
| L11 | 27 | 30 | 36 | 44 | 55 | 67 | 85 | 95 | 110 |
| L13 | 13 | 15 | 15 | 15 | 15 | 15 | 20 | 25 | 25 |
| L21 | 75 | 84.5 | 99 | 122 | 144.5 | 157.5 | 206.5 | 239 | 248 |
| L22 | 107.5 | 122 | 144 | 177 | 214.5 | 242.5 | 311.5 | 359 | 388 |
| L23 | 40 | 47 | 52 | 53 | 70 | 80 | 95 | 115 | 115 |
| L24 | 30 | 32 | 35 | 35 | 50 | 55 | 65 | 80 | 80 |
| C1 ¹¹ | 46 | 46 | 70 | 100 | 100 | 100 | 130 | 165 | 165 |
| C2 ¹¹ | M4 | M4 | M5 | M6 | M6 | M6 | M8 | M10 | M10 |
| C3 ¹¹ | ≤12 | ≤12 | ≤16 | ≤24 | ≤24 | ≤24 | ≤32 | ≤38 | ≤38 |
| C4 ¹¹ | 30 | 30 | 34 | 40 | 40 | 40 | 50 | 60 | 60 |
| C5 ¹¹ | 30 | 30 | 50 | 80 | 80 | 80 | 110 | 130 | 130 |
| C6 ¹¹ | 3.5 | 3.5 | 8 | 4 | 4 | 4 | 5 | 6 | 6 |
| C7 ¹¹ | 42 | 42 | 60 | 92 | 92 | 92 | 115 | 142 | 142 |
| C8 ¹¹ | 21.5 | 21.5 | 21.5 | 20 | 20 | 20 | 24 | 31 | 31 |
| C9 ¹¹ | 161.5 | 181 | 210.5 | 252 | 304.5 | 347.5 | 440.5 | 510 | 559 |
| C10 ¹¹ | 14.5 | 14.5 | 15.5 | 13 | 13 | 13 | 16 | 21 | 21 |
| B3 _{P9} | 5 | 5 | 6 | 6 | 10 | 12 | 14 | 16 | 18 |
| H3 | 15.3 | 16.3 | 20.8 | 24.8 | 35.3 | 43.3 | 53.8 | 59.3 | 64.4 |

11. C1~C10 为公制马达规范尺寸。请参考APEX网页“减速机选用”功能，来查看您的马达安装搭配。

AT-FH / ATB-FH系列尺寸 (三节, 减速比 i=75~500)

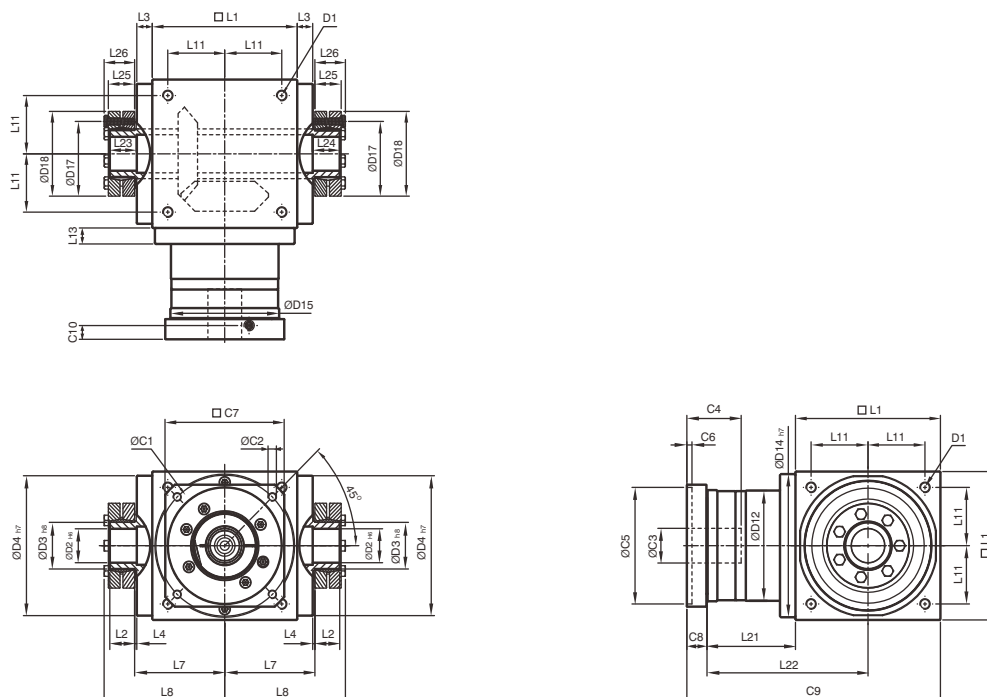


*ATB系列的尺寸与AT系列相同。

[单位: mm]

| 尺寸 | AT110FH | AT140FH | AT170FH | AT210FH | AT240FH | AT280FH |
|-------------------|---------|---------|---------|---------|---------|---------|
| D1 | M8 | M10 | M12 | M16 | M16 | M16 |
| D2 _{H7} | 22 | 32 | 40 | 50 | 55 | 60 |
| D4 _{h7} | 108 | 135 | 165 | 205 | 235 | 275 |
| D5 | 53 | 68 | 83 | 104 | 124 | 144 |
| D7 | 33 | 47 | 55 | 75 | 85 | 110 |
| D12 | 106 | 104 | 128 | 160 | 180 | 200 |
| D14 _{h7} | 108 | 135 | 165 | 205 | 235 | 275 |
| D15 | 107 | 106 | 130 | 158 | 178 | 198 |
| L1 | 110 | 140 | 170 | 210 | 240 | 280 |
| L3 | 15 | 15 | 15 | 20 | 25 | 25 |
| L4 | 2 | 2 | 2 | 2 | 2 | 2 |
| L7 | 72 | 87 | 102 | 127 | 147 | 167 |
| L11 | 44 | 55 | 67 | 85 | 95 | 110 |
| L13 | 15 | 15 | 15 | 20 | 25 | 25 |
| L21 | 136.5 | 159.5 | 183.5 | 226 | 269 | 278 |
| L22 | 191.5 | 229.5 | 268.5 | 331 | 389 | 418 |
| L23 | 53 | 70 | 80 | 95 | 115 | 115 |
| L24 | 35 | 50 | 55 | 65 | 80 | 80 |
| C1 ¹² | 46 | 46 | 70 | 70 | 100 | 100 |
| C2 ¹² | M4 | M4 | M5 | M5 | M6 | M6 |
| C3 ¹² | ≤12 | ≤12 | ≤16 | ≤16 | ≤24 | ≤24 |
| C4 ¹² | 30 | 30 | 34 | 34 | 40 | 40 |
| C5 ¹² | 30 | 30 | 50 | 50 | 80 | 80 |
| C6 ¹² | 3.5 | 3.5 | 8 | 8 | 4 | 4 |
| C7 ¹² | 42 | 42 | 60 | 60 | 92 | 92 |
| C8 ¹² | 21.5 | 21.5 | 21.5 | 21.5 | 20 | 20 |
| C9 ¹² | 268 | 321 | 375 | 457.5 | 529 | 578 |
| C10 ¹² | 14.5 | 14.5 | 15.5 | 15.5 | 13 | 13 |
| B3 _{p9} | 6 | 10 | 12 | 14 | 16 | 18 |
| H3 | 24.8 | 35.3 | 43.3 | 53.8 | 59.3 | 64.4 |

AT-FC / ATB-FC系列尺寸 (单节, 减速比 i=1~5)



*ATB系列的尺寸与AT系列相同。

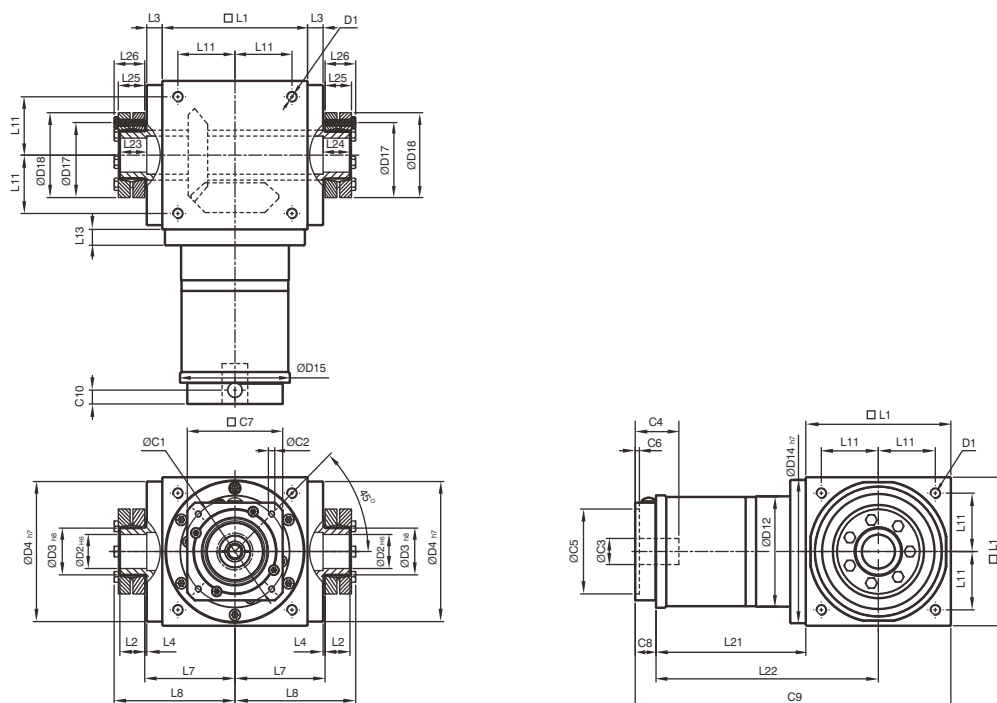
[单位: mm]

| 尺寸 | AT065FC | AT075FC | AT090FC | AT110FC | AT140FC | AT170FC | AT210FC | AT240FC | AT280FC |
|-------------------|-------------------------|-----------------------------------|---------|---------|---------|---------|---------|---------|---------|
| D1 | M4 | M6 | M6 | M8 | M10 | M12 | M16 | M16 | M16 |
| D2 H6 | 13 | 14 | 18 | 22 | 32 | 40 | 50 | 55 | 60 |
| D3 h8 | 16 | 16 | 22 | 25 | 44 | 50 | 62 | 68 | 75 |
| D4 h7 | 63 | 73 | 88 | 108 | 135 | 165 | 205 | 235 | 275 |
| D12 | 62 | 72 | 86 | 106 | 104 | 128 | 160 | 180 | 200 |
| D14 h7 | 63 | 73 | 88 | 108 | 135 | 165 | 205 | 235 | 275 |
| D15 | 62.9 | 72.9 | 87 | 107 | 105 | 130 | 158 | 178 | 198 |
| D17 | 26 | 26 | 36 | 38 | 61 | 70 | 86 | 86 | 100 |
| D18 | 41 | 41 | 50 | 50 | 80 | 90 | 110 | 115 | 138 |
| L1 | 65 | 75 | 90 | 110 | 140 | 170 | 210 | 240 | 280 |
| L2 | 14 | 14 | 18 | 18 | 24 | 26 | 29 | 29 | 30.5 |
| L3 | 13 | 14.5 | 15 | 15 | 15 | 15 | 20 | 25 | 25 |
| L4 | 2 | 2 | 2 | 2 | 2 | 2 | 2 | 2 | 2 |
| L7 | 47.5 | 54 | 62 | 72 | 87 | 102 | 127 | 147 | 167 |
| L8 | 66 | 72.5 | 85 | 95 | 116.5 | 133.5 | 161.5 | 181.5 | 205 |
| L11 | 27 | 30 | 36 | 44 | 55 | 67 | 85 | 95 | 110 |
| L13 | 13 | 15 | 15 | 15 | 15 | 15 | 20 | 25 | 25 |
| L21 | 49 | 60.5 | 63 | 69.5 | 85.5 | 95 | 130 | 144.5 | 135 |
| L22 | 81.5 | 98 | 108 | 124.5 | 155.5 | 180 | 235 | 264.5 | 275 |
| L23 | 15 | 15 | 20 | 20 | 26 | 28 | 31 | 31 | 32.5 |
| L24 | 15 | 15 | 20 | 20 | 26 | 28 | 31 | 31 | 32.5 |
| L25 | 15 | 15 | 19.5 | 19.5 | 25.5 | 27.5 | 30.5 | 30.5 | 32.5 |
| L26 | 18.5 | 18.5 | 23 | 23 | 29.5 | 31.5 | 34.5 | 34.5 | 38 |
| C1 ¹³ | 46 | 70 | 100 | 100 | 130 | 165 | 215 | 215 | 235 |
| C2 ¹³ | M4 | M5 | M6 | M6 | M8 | M10 | M12 | M12 | M12 |
| C3 ¹³ | ≤11 / ≤12 ¹⁴ | ≤14 / ≤15.875 / ≤16 ¹⁴ | ≤19 | ≤24 | ≤32 | ≤38 | ≤42 | ≤48 | ≤55 |
| C4 ¹³ | 30 | 34 | 40 | 40 | 50 | 60 | 85 | 85 | 116 |
| C5 ¹³ | 30 | 50 | 80 | 80 | 110 | 130 | 180 | 180 | 200 |
| C6 ¹³ | 3.5 | 8 | 4 | 4 | 5 | 6 | 6 | 6 | 6 |
| C7 ¹³ | 42 | 60 | 90 | 90 | 115 | 142 | 190 | 190 | 220 |
| C8 ¹³ | 19.5 | 19 | 17 | 17 | 19.5 | 22.5 | 29 | 29 | 63 |
| C9 ¹³ | 133.5 | 154.5 | 170 | 196.5 | 245 | 287.5 | 369 | 413.5 | 478 |
| C10 ¹³ | 13.25 | 13.5 | 10.75 | 10.75 | 13 | 15 | 20.75 | 20.75 | 53.5 |

13. C1~C10 为公制马达规范尺寸。请参考APEX网页“减速机选用”功能，来查看您的马达安装搭配。

14. AT065FCM1 提供 C3 ≤12 选择；AT075FCM1 提供 C3 ≤16 选择；AT075FCM2 提供 C3 ≤15.875 选择。

AT-FC / ATB-FC系列尺寸 (双节, 减速比 i=7~50)

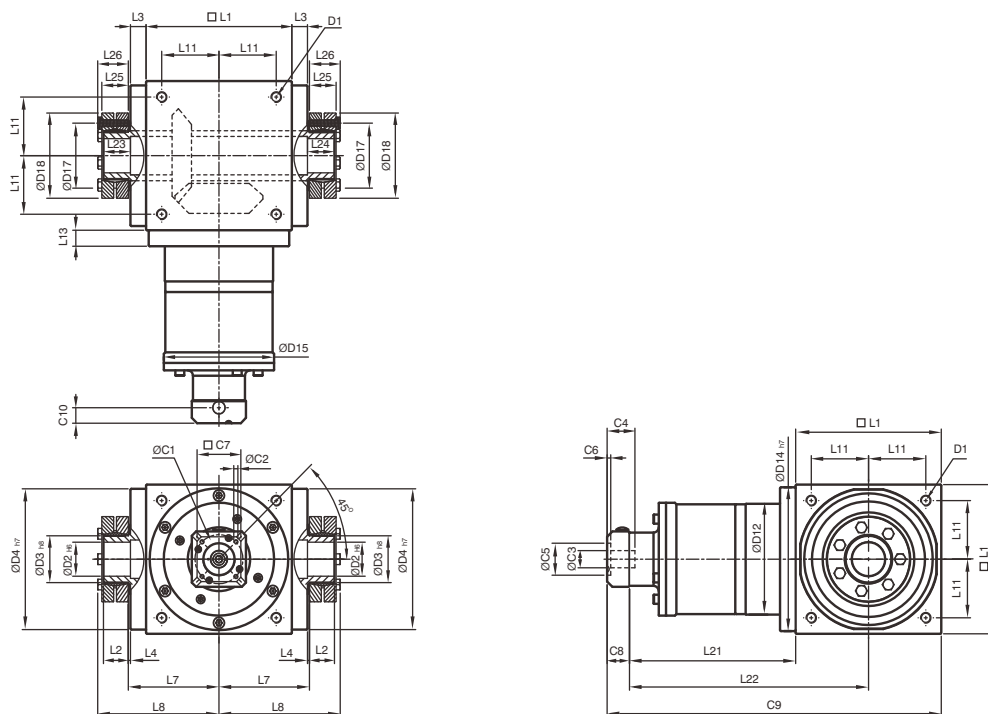


*ATB系列的尺寸与AT系列相同。

[单位: mm]

| 尺寸 | AT065FC | AT075FC | AT090FC | AT110FC | AT140FC | AT170FC | AT210FC | AT240FC | AT280FC |
|-------------------|---------|---------|---------|---------|---------|---------|---------|---------|---------|
| D1 | M4 | M6 | M6 | M8 | M10 | M12 | M16 | M16 | M16 |
| D2 H6 | 13 | 14 | 18 | 22 | 32 | 40 | 50 | 55 | 60 |
| D3 h8 | 16 | 16 | 22 | 25 | 44 | 50 | 62 | 68 | 75 |
| D4 h7 | 63 | 73 | 88 | 108 | 135 | 165 | 205 | 235 | 275 |
| D12 | 62 | 72 | 86 | 106 | 104 | 128 | 160 | 180 | 200 |
| D14 h7 | 63 | 73 | 88 | 108 | 135 | 165 | 205 | 235 | 275 |
| D15 | 62.9 | 72.9 | 87 | 107 | 106 | 130 | 158 | 178 | 198 |
| D17 | 26 | 26 | 36 | 38 | 61 | 70 | 86 | 86 | 100 |
| D18 | 41 | 41 | 50 | 50 | 80 | 90 | 110 | 115 | 138 |
| L1 | 65 | 75 | 90 | 110 | 140 | 170 | 210 | 240 | 280 |
| L2 | 14 | 14 | 18 | 18 | 24 | 26 | 29 | 29 | 30.5 |
| L3 | 13 | 14.5 | 15 | 15 | 15 | 15 | 20 | 25 | 25 |
| L4 | 2 | 2 | 2 | 2 | 2 | 2 | 2 | 2 | 2 |
| L7 | 47.5 | 54 | 62 | 72 | 87 | 102 | 127 | 147 | 167 |
| L8 | 66 | 72.5 | 85 | 95 | 116.5 | 133.5 | 161.5 | 181.5 | 205 |
| L11 | 27 | 30 | 36 | 44 | 55 | 67 | 85 | 95 | 110 |
| L13 | 13 | 15 | 15 | 15 | 15 | 15 | 20 | 25 | 25 |
| L21 | 75 | 84.5 | 99 | 122 | 144.5 | 157.5 | 206.5 | 239 | 248 |
| L22 | 107.5 | 122 | 144 | 177 | 214.5 | 242.5 | 311.5 | 359 | 388 |
| L23 | 15 | 15 | 20 | 20 | 26 | 28 | 31 | 31 | 32.5 |
| L24 | 15 | 15 | 20 | 20 | 26 | 28 | 31 | 31 | 32.5 |
| L25 | 15 | 15 | 19.5 | 19.5 | 25.5 | 27.5 | 30.5 | 30.5 | 32.5 |
| L26 | 18.5 | 18.5 | 23 | 23 | 29.5 | 31.5 | 34.5 | 34.5 | 38 |
| C1 ¹⁵ | 46 | 46 | 70 | 100 | 100 | 100 | 130 | 165 | 165 |
| C2 ¹⁵ | M4 | M4 | M5 | M6 | M6 | M6 | M8 | M10 | M10 |
| C3 ¹⁵ | ≤12 | ≤12 | ≤16 | ≤24 | ≤24 | ≤24 | ≤32 | ≤38 | ≤38 |
| C4 ¹⁵ | 30 | 30 | 34 | 40 | 40 | 40 | 50 | 60 | 60 |
| C5 ¹⁵ | 30 | 30 | 50 | 80 | 80 | 80 | 110 | 130 | 130 |
| C6 ¹⁵ | 3.5 | 3.5 | 8 | 4 | 4 | 4 | 5 | 6 | 6 |
| C7 ¹⁵ | 42 | 42 | 60 | 92 | 92 | 92 | 115 | 142 | 142 |
| C8 ¹⁵ | 21.5 | 21.5 | 21.5 | 20 | 20 | 20 | 24 | 31 | 31 |
| C9 ¹⁵ | 161.5 | 181 | 210.5 | 252 | 304.5 | 347.5 | 440.5 | 510 | 559 |
| C10 ¹⁵ | 14.5 | 14.5 | 15.5 | 13 | 13 | 13 | 16 | 21 | 21 |

AT-FC / ATB-FC系列尺寸 (三节, 减速比 $i=75\sim500$)



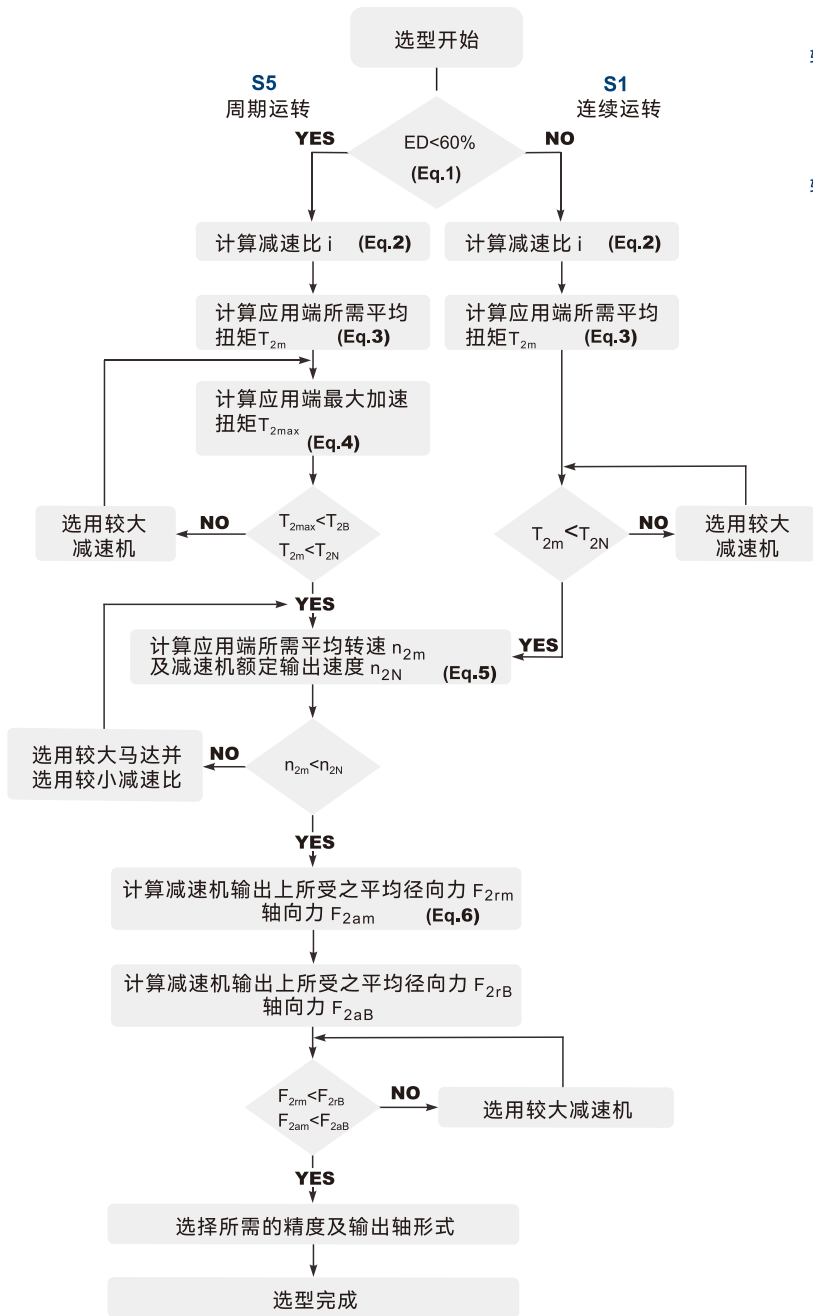
*ATB系列的尺寸与AT系列相同。

[单位: mm]

| 尺寸 | AT110FC | AT140FC | AT170FC | AT210FC | AT240FC | AT280FC |
|-------------------|---------|---------|---------|---------|---------|---------|
| D1 | M8 | M10 | M12 | M16 | M16 | M16 |
| D2 H6 | 22 | 32 | 40 | 50 | 55 | 60 |
| D3 h8 | 25 | 44 | 50 | 62 | 68 | 75 |
| D4 h7 | 108 | 135 | 165 | 205 | 235 | 275 |
| D12 | 106 | 104 | 128 | 160 | 180 | 200 |
| D14 h7 | 108 | 135 | 165 | 205 | 235 | 275 |
| D15 | 107 | 106 | 130 | 158 | 178 | 198 |
| D17 | 38 | 61 | 70 | 86 | 86 | 100 |
| D18 | 50 | 80 | 90 | 110 | 115 | 138 |
| L1 | 110 | 140 | 170 | 210 | 240 | 280 |
| L2 | 18 | 24 | 26 | 29 | 29 | 30.5 |
| L3 | 15 | 15 | 15 | 20 | 25 | 25 |
| L4 | 2 | 2 | 2 | 2 | 2 | 2 |
| L7 | 72 | 87 | 102 | 127 | 147 | 167 |
| L8 | 95 | 116.5 | 133.5 | 161.5 | 181.5 | 205 |
| L11 | 44 | 55 | 67 | 85 | 95 | 110 |
| L13 | 15 | 15 | 15 | 20 | 25 | 25 |
| L21 | 136.5 | 159.5 | 183.5 | 226 | 269 | 278 |
| L22 | 191.5 | 229.5 | 268.5 | 331 | 389 | 418 |
| L23 | 20 | 26 | 28 | 31 | 31 | 32.5 |
| L24 | 20 | 26 | 28 | 31 | 31 | 32.5 |
| L25 | 19.5 | 25.5 | 27.5 | 30.5 | 30.5 | 32.5 |
| L26 | 23 | 29.5 | 31.5 | 34.5 | 34.5 | 38 |
| C1 ¹⁶ | 46 | 46 | 70 | 70 | 100 | 100 |
| C2 ¹⁶ | M4 | M4 | M5 | M5 | M6 | M6 |
| C3 ¹⁶ | ≤12 | ≤12 | ≤16 | ≤16 | ≤24 | ≤24 |
| C4 ¹⁶ | 30 | 30 | 34 | 34 | 40 | 40 |
| C5 ¹⁶ | 30 | 30 | 50 | 50 | 80 | 80 |
| C6 ¹⁶ | 3.5 | 3.5 | 8 | 8 | 4 | 4 |
| C7 ¹⁶ | 42 | 42 | 60 | 60 | 92 | 92 |
| C8 ¹⁶ | 21.5 | 21.5 | 21.5 | 21.5 | 20 | 20 |
| C9 ¹⁶ | 268 | 321 | 375 | 457.5 | 529 | 578 |
| C10 ¹⁶ | 14.5 | 14.5 | 15.5 | 15.5 | 13 | 13 |

16. C1~C10 为公制马达规范尺寸。请参考APEX网页“减速机选用”功能，来查看您的马达安装搭配。

减速机的选用



S5周期运转之建议事项

一般的应用惯量须符合以下公式

$$\frac{J_L}{i^2} \leq 4 \times J_m$$

最适当的应用惯量须符合以下公式

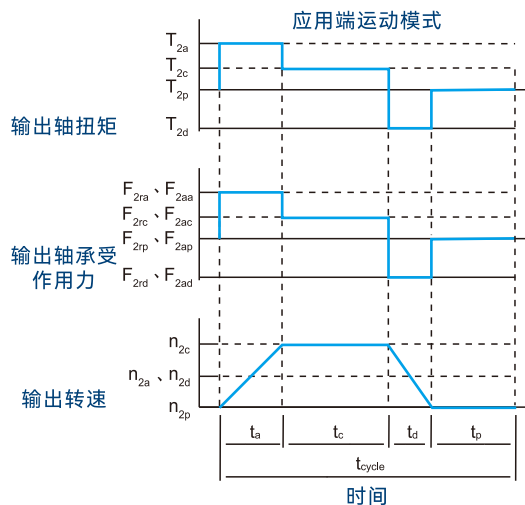
$$\frac{J_L}{i^2} \cong J_m$$

J_L 负载惯量

J_m 马达惯量

免责声明:

台湾精锐科技股份有限公司会努力确保录中各项数据的准确性。APEX对于本型录相关描述不精确或遗漏而造成的损失, 不承担责任。



$$1. ED = \frac{t_a + t_c + t_d}{t_{cycle}} \times 100\%$$

下标说明: a. 加速 c. 等速
d. 减速 p. 停止

(Eq.1)

$$2. i \cong \frac{n_m}{n_{work}}$$

n_m 马达输出速度
 n_{work} 实际应用速度

(Eq.2)

$$3. T_{2m} = \sqrt[3]{\frac{n_{2a} \times t_a \times T_{2a}^3 + n_{2c} \times t_c \times T_{2c}^3 + n_{2d} \times t_d \times T_{2d}^3}{n_{2a} \times t_a + n_{2c} \times t_c + n_{2d} \times t_d}}$$

(Eq.3)

$$4. T_{2max} = T_{mB} \times i \times K_s \times \eta$$

K_s 负载系数

| K_s | 周期次数 / 小时 |
|-------|---------------|
| 1.0 | 0 ~ 1,000 |
| 1.1 | 1,000 ~ 1,500 |
| 1.3 | 1,500 ~ 2,000 |
| 1.6 | 2,000 ~ 3,000 |
| 1.8 | 3,000 ~ 5,000 |

T_{mB} 马达最大输出扭矩

η 减速机运转效率

(Eq.4)

$$5. n_{2a} = n_{2d} = \frac{1}{2} \times n_{2c}$$

$$n_{2m} = \frac{n_{2a} \times t_a + n_{2c} \times t_c + n_{2d} \times t_d}{t_a + t_c + t_d}$$

$$n_{2N} = \frac{n_1 N}{i}$$

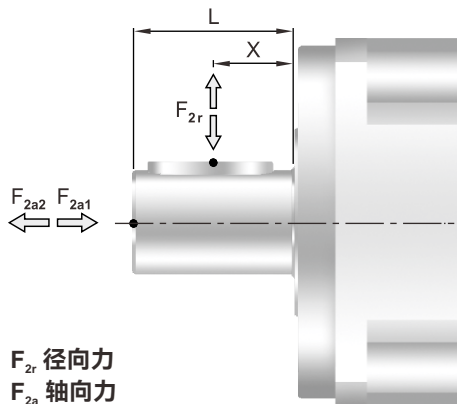
(Eq.5)

$$6. F_{2rm} = \sqrt[3]{\frac{n_{2a} \times t_a \times F_{2ra}^3 + n_{2c} \times t_c \times F_{2rc}^3 + n_{2d} \times t_d \times F_{2rd}^3}{n_{2a} \times t_a + n_{2c} \times t_c + n_{2d} \times t_d}}$$

$$F_{2am} = \sqrt[3]{\frac{n_{2a} \times t_a \times F_{2aa}^3 + n_{2c} \times t_c \times F_{2ac}^3 + n_{2d} \times t_d \times F_{2ad}^3}{n_{2a} \times t_a + n_{2c} \times t_c + n_{2d} \times t_d}}$$

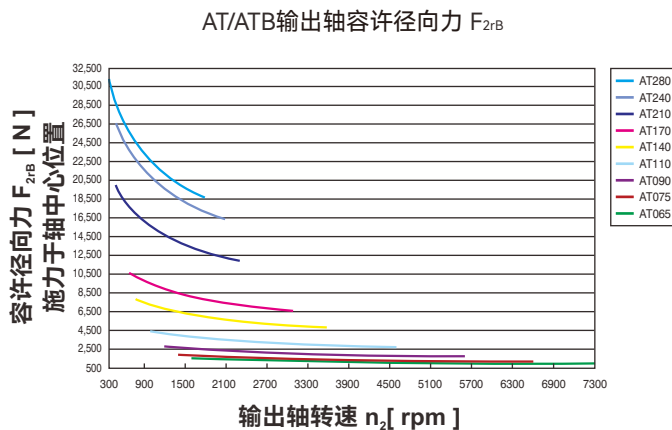
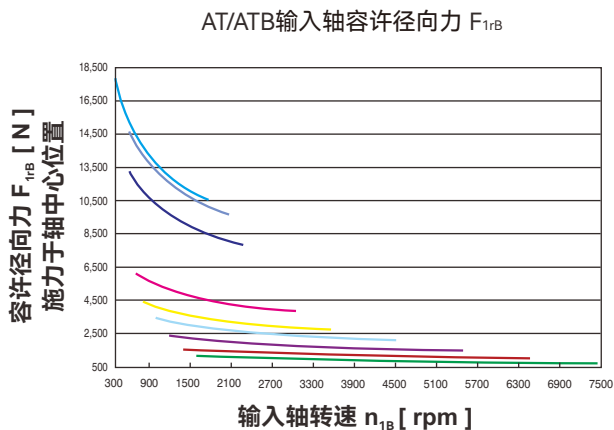
(Eq.6)

减速机输出轴之容许径向力及轴向力

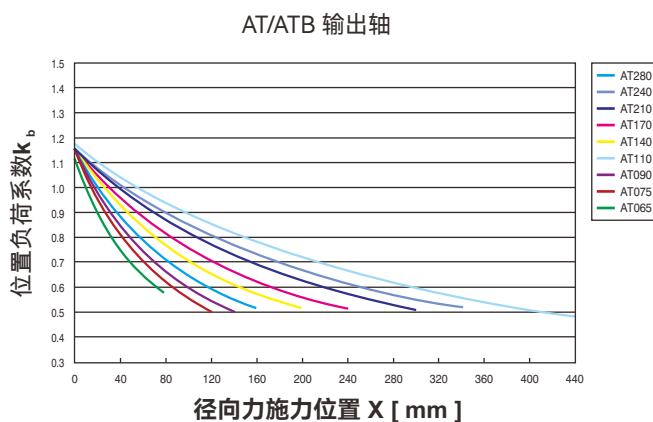
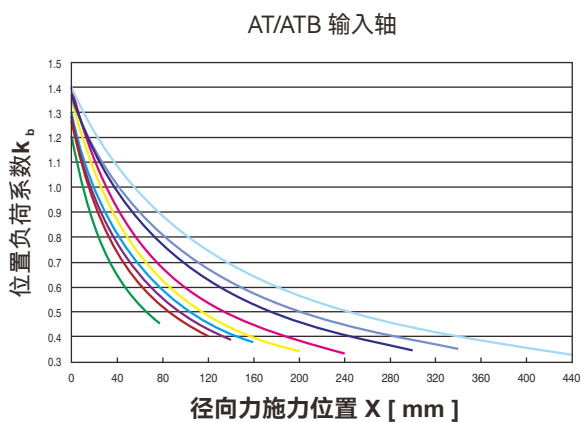


减速机输出轴所能承受之最大径向力及轴向力，端视内部支撑轴承之设计，台湾精锐减速机采用大尺寸的轴承及较大跨距的设计，其能承受更大的径向及轴向负荷。

F_{2r} 径向力
 F_{2a} 轴向力



如果径向力 F 施加在输出轴中心 $X = 1/2 \times L$ ，则允许的径向载荷如左图所示。






如果径向力 F_r 未施加在输出轴中心 $X < 1/2 \times L$ 或 $X > 1/2 \times L$ ，则允许的径向和轴向载荷可通过左图上的位置载荷系数 k_b 计算。





APEX DYNAMICS, INC.


上海精锐广用动力科技有限公司

 上海市青浦工业园区竹盈路128号

 86-21-69220577  86-21-69220571

 www.apexdyna.cn

 sales@apexdyna.cn

 **86-21-69220585**

APEX-2024-08-AT/ATB Series



公司网址



公司微信